

\$3,250,000 - 52422 Rg Rd 275, Stony Plain

MLS® #E4328130

\$3,250,000

0 Bedroom, 0.00 Bathroom,
Land Commercial on 0.00 Acres

None, Stony Plain, AB

30+ acres ready for the next phase of development in Stony Plain and located directly off Veterans Boulevard. Amazing location for residential development. GST is applicable.

Built in 2013

Essential Information

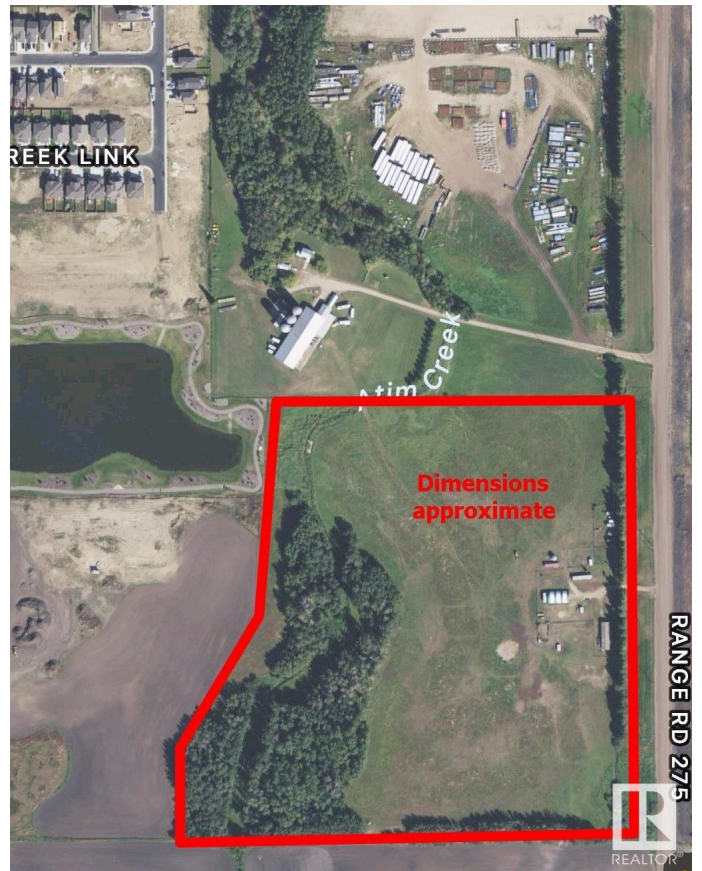
| | |
|------------|-----------------|
| MLS® # | E4328130 |
| Price | \$3,250,000 |
| Bathrooms | 0.00 |
| Acres | 0.00 |
| Year Built | 2013 |
| Type | Land Commercial |
| Status | Active |

Community Information

| | |
|-------------|-----------------|
| Address | 52422 Rg Rd 275 |
| Area | Stony Plain |
| Subdivision | None |
| City | Stony Plain |
| County | ALBERTA |
| Province | AB |
| Postal Code | T7Z 1Y3 |

Exterior

| | |
|----------|-------------|
| Exterior | See Remarks |
|----------|-------------|



Construction See Remarks

Additional Information

Date Listed February 17th, 2023

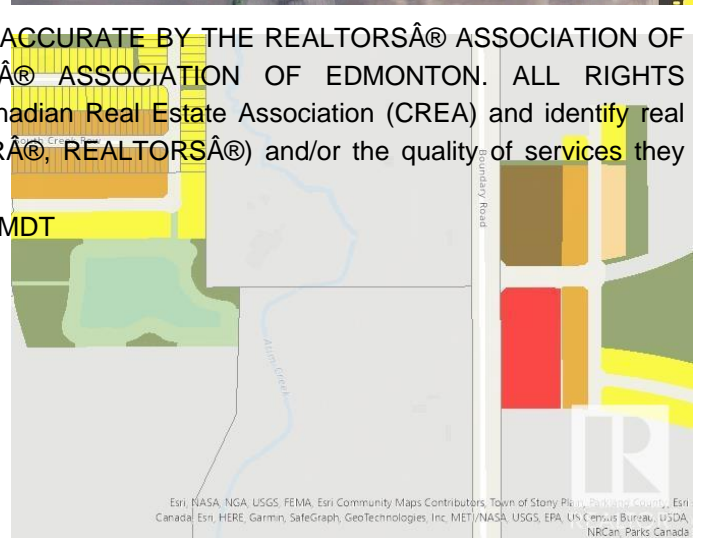
Days on Market 785

Zoning Zone 91



DATA IS DEEMED RELIABLE BUT IS NOT GUARANTEED ACCURATE BY THE REALTORS® ASSOCIATION OF EDMONTON. COPYRIGHT 2025 BY THE REALTORS® ASSOCIATION OF EDMONTON. ALL RIGHTS RESERVED. Trademarks are owned or controlled by the Canadian Real Estate Association (CREA) and identify real estate professionals who are members of CREA (REALTOR®, REALTORS®) and/or the quality of services they provide (MLS®, Multiple Listing Service®)

Listing information last updated on April 12th, 2025 at 1:02am MDT



Esri, NASA, NGA, USGS, FEMA, Esri Community Maps Contributors, Town of Stony Plain, Bow River County, Esri, Canada, Esri, HERE, Garmin, SafeGraph, GeoTechnologies, Inc. MET/NASA, USGS, EPA, US Census Bureau, USDA, NRCan, Parks Canada