

\$188,800 - Hwy 18 52 Street, Clyde

MLS® #E4374751

\$188,800

0 Bedroom, 0.00 Bathroom,
Single Family on 0.00 Acres

Clyde, Clyde, AB

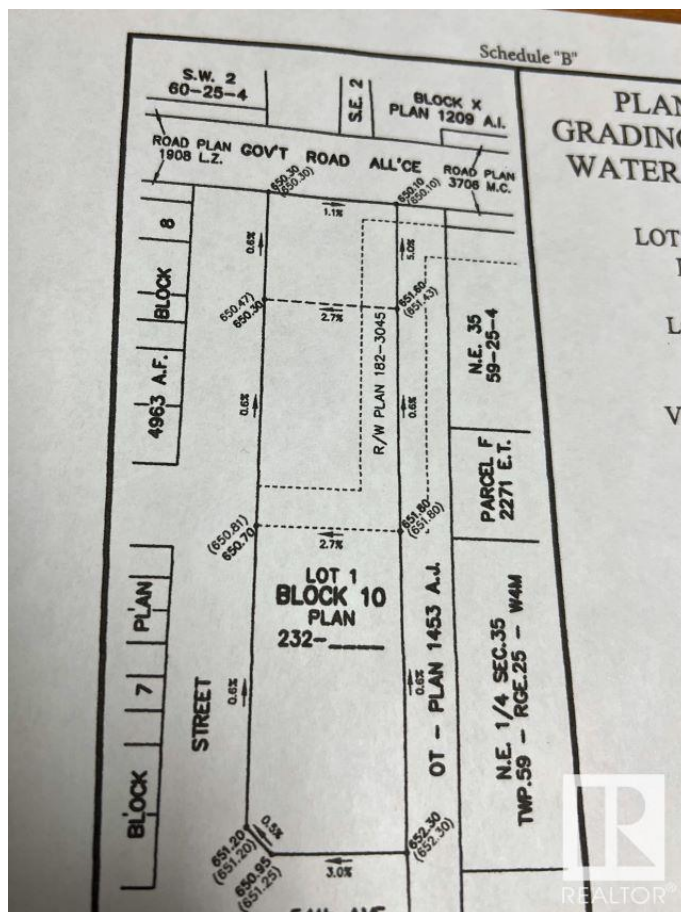
Are you a developer? 1.74 Acres in the Village of Clyde. Property is in the process of being subdivided into residential lots. The south end of the property will be subdivided into some commercial lots. The Driveway for Eleanor hall School, on the west side of the school, crosses this property. Long narrow strip of property, 60' deep and 1200' long. A great investment. Buy this property, register the plan and sell off as several lots.

Essential Information

MLS® #	E4374751
Price	\$188,800
Bathrooms	0.00
Acres	0.00
Type	Single Family
Sub-Type	Vacant Lot/Land
Status	Active

Community Information

Address	Hwy 18 52 Street
Area	Clyde
Subdivision	Clyde
City	Clyde
County	ALBERTA
Province	AB
Postal Code	T0G 0P0



Exterior

Exterior Features Schools

School Information

Elementary	Eleanor Hall Clyde
Middle	Eleaonor Hall Clyde

Additional Information

Date Listed	February 28th, 2024
Days on Market	416
Zoning	Zone 60

DATA IS DEEMED RELIABLE BUT IS NOT GUARANTEED ACCURATE BY THE REALTORS® ASSOCIATION OF EDMONTON. COPYRIGHT 2025 BY THE REALTORS® ASSOCIATION OF EDMONTON. ALL RIGHTS RESERVED.Trademarks are owned or controlled by the Canadian Real Estate Association (CREA) and identify real estate professionals who are members of CREA (REALTOR®, REALTORS®) and/or the quality of services they provide (MLS®, Multiple Listing Service®)

Listing information last updated on April 19th, 2025 at 6:32pm MDT