

\$81,900 - #1 41221 Twp Rd 620, Rural Bonnyville M.D.

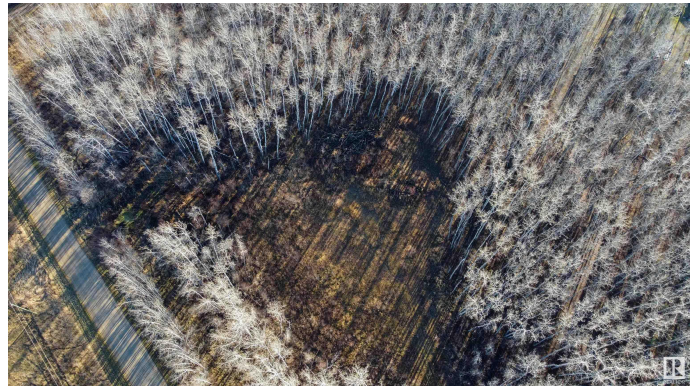
MLS® #E4413464

\$81,900

0 Bedroom, 0.00 Bathroom,
Rural on 4.98 Acres

None, Rural Bonnyville M.D., AB

Discover the perfect canvas for your dream home or peaceful getaway on this remarkable 4.98-acre lot by Cherry Grove. This scenic property, nestled within a tranquil and tree-filled setting, offers unparalleled privacy with the convenience of being just 12 minutes from Cold Lake™'s amenities. With approximately 1 acre cleared, there™s ample space for a custom home, or a pre-manufactured dwelling. Positioned on a corner lot with road access, utilities for gas and power are available right at the property edge. Embrace the opportunity to create your ideal retreat surrounded by nature!



Essential Information

MLS® #	E4413464
Price	\$81,900
Bathrooms	0.00
Acres	4.98
Type	Rural
Sub-Type	Vacant Lot/Land
Status	Active

Community Information

Address	#1 41221 Twp Rd 620
Area	Rural Bonnyville M.D.
Subdivision	None

City	Rural Bonnyville M.D.
County	ALBERTA
Province	AB
Postal Code	T0A 0A0

Exterior

Exterior Features Corner Lot, Private Setting, Treed Lot

Additional Information

Date Listed November 13th, 2024

Days on Market 121

Zoning Zone 60

DATA IS DEEMED RELIABLE BUT IS NOT GUARANTEED ACCURATE BY THE REALTORS® ASSOCIATION OF EDMONTON. COPYRIGHT 2025 BY THE REALTORS® ASSOCIATION OF EDMONTON. ALL RIGHTS RESERVED. Trademarks are owned or controlled by the Canadian Real Estate Association (CREA) and identify real estate professionals who are members of CREA (REALTOR®, REALTORS®) and/or the quality of services they provide (MLS®, Multiple Listing Service®)

Listing information last updated on March 14th, 2025 at 1:47am MDT