

# \$264,000 - 62216 Range Road 200, Rural Thorhild County

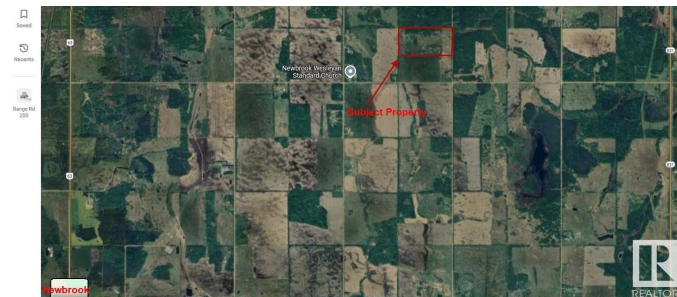
MLS® #E4414166

**\$264,000**

0 Bedroom, 0.00 Bathroom,  
Rural on 79.82 Acres

None, Rural Thorhild County, AB

80 ACRES RECREATIONAL Land in a secluded location on a dead end road, just northeast of Newbrook. GREAT HUNTING WITH OFF GRID CABIN!! Property boasts partial fencing, combination of open land and trees. Newer built 12x 24 log cabin that comes with the land. The cabin is cozy and there is a woodstove for heat. Nicely decorated with modern colours, wood accents and a loft bedroom. OFF-GRID definition here means there is no gas service, power, water or septic service. There are 2 circuits wired in to the cabin for lights and plugs which one could use with a generator and batteries. Bring in your own water tank to take advantage of the shower and sinks in the cabin, with gray water straight discharge. There is a water dug out on the property, which could be utilized for water access. There is lots of wildlife and plenty of opportunities for hunting and fishing , quading, snow shoeing, and hiking in the area. Great get away property close to Long Lake.



## Essential Information

MLS® #	E4414166
Price	\$264,000
Bathrooms	0.00
Acres	79.82

Type	Rural
Sub-Type	Vacant Lot/Land
Status	Active

### Community Information

Address	62216 Range Road 200
Area	Rural Thorhild County
Subdivision	None
City	Rural Thorhild County
County	ALBERTA
Province	AB
Postal Code	T0A 2P0

### Exterior

Exterior Features	Recreation Use, Rolling Land, See Remarks, Partially Fenced
-------------------	---

### Additional Information

Date Listed	November 20th, 2024
Days on Market	149
Zoning	Zone 60

DATA IS DEEMED RELIABLE BUT IS NOT GUARANTEED ACCURATE BY THE REALTORS® ASSOCIATION OF EDMONTON. COPYRIGHT 2025 BY THE REALTORS® ASSOCIATION OF EDMONTON. ALL RIGHTS RESERVED. Trademarks are owned or controlled by the Canadian Real Estate Association (CREA) and identify real estate professionals who are members of CREA (REALTOR®, REALTORS®) and/or the quality of services they provide (MLS®, Multiple Listing Service®)

Listing information last updated on April 18th, 2025 at 9:47am MDT