

\$645,250 - 1205 16a Avenue, Edmonton

MLS® #E4415752

\$645,250

4 Bedroom, 3.00 Bathroom, 2,263 sqft

Single Family on 0.00 Acres

Aster, Edmonton, AB

The Assurance Evolve model has everything you need: an oversized double attached garage, separate side entry, 9' ceilings on the main and basement levels, and LVP flooring, all accented by SLD recessed lighting. The foyer leads to a 3pc bath, mudroom with a closet (garage accessible), and a walk-through pantry connecting the open kitchen, nook, and great room. The main floor also includes a bedroom. The kitchen features quartz counters, an eating island, a Silgranite sink, a Moen "Indi" black faucet, microwave shelf, chimeny-style hood fan, tiled backsplash, pendant lighting, and soft-close Thermofoil cabinets. Large windows and sliding patio doors offer backyard access. Upstairs, the primary suite has a 5pc ensuite with double sinks, a soaker tub, a walk-in shower, and a walk-in closet. A bonus room, laundry, and three additional bedrooms with ample closets complete the upper floor. Includes an appliance package, upgraded railings, and basement rough-in plumbing.

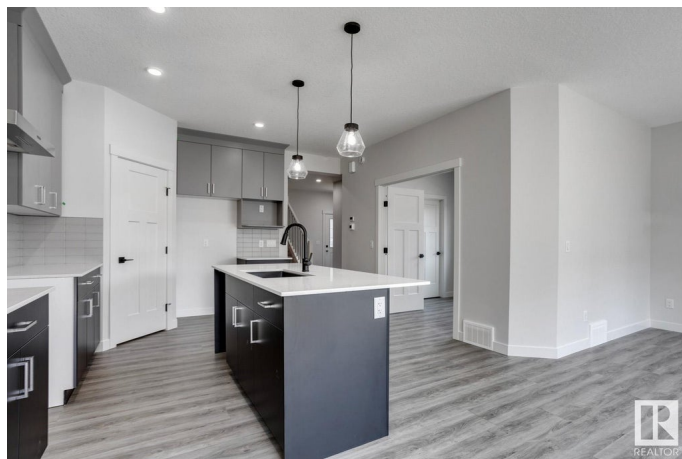
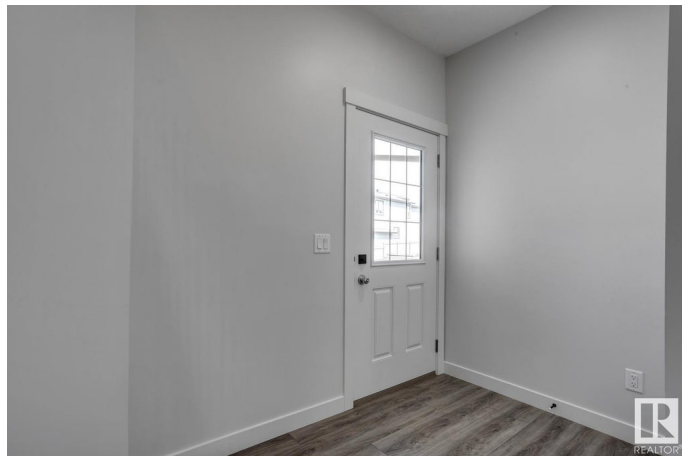
Built in 2024

Essential Information

MLS® # E4415752

Price \$645,250

Bedrooms 4



Bathrooms	3.00
Full Baths	3
Square Footage	2,263
Acres	0.00
Year Built	2024
Type	Single Family
Sub-Type	Detached Single Family
Style	2 Storey
Status	Active

Community Information

Address	1205 16a Avenue
Area	Edmonton
Subdivision	Aster
City	Edmonton
County	ALBERTA
Province	AB
Postal Code	T6T 2V1

Amenities

Amenities	Ceiling 9 ft., Closet Organizers, Detectors Smoke, No Animal Home, No Smoking Home, Smart/Program. Thermostat, HRV System
Parking Spaces	4
Parking	Double Garage Attached

Interior

Interior Features	ensuite bathroom
Appliances	Dishwasher-Built-In, Dryer, Garage Control, Garage Opener, Refrigerator, Stove-Electric, Washer
Heating	Forced Air-1, Natural Gas
Fireplace	Yes
Fireplaces	Insert
Stories	2
Has Basement	Yes
Basement	Full, Unfinished

Exterior

Exterior	Wood, Stone, Vinyl
Exterior Features	Flat Site, No Back Lane, Playground Nearby, Schools, Shopping Nearby

Roof	Asphalt Shingles
Construction	Wood, Stone, Vinyl
Foundation	Concrete Perimeter

Additional Information

Date Listed	December 10th, 2024
Days on Market	138
Zoning	Zone 30

DATA IS DEEMED RELIABLE BUT IS NOT GUARANTEED ACCURATE BY THE REALTORS® ASSOCIATION OF EDMONTON. COPYRIGHT 2025 BY THE REALTORS® ASSOCIATION OF EDMONTON. ALL RIGHTS RESERVED.Trademarks are owned or controlled by the Canadian Real Estate Association (CREA) and identify real estate professionals who are members of CREA (REALTOR®, REALTORS®) and/or the quality of services they provide (MLS®, Multiple Listing Service®)

Listing information last updated on April 27th, 2025 at 2:17am MDT