

\$1,064,000 - 54517 Range Road 22 B, Rural Lac Ste. Anne County

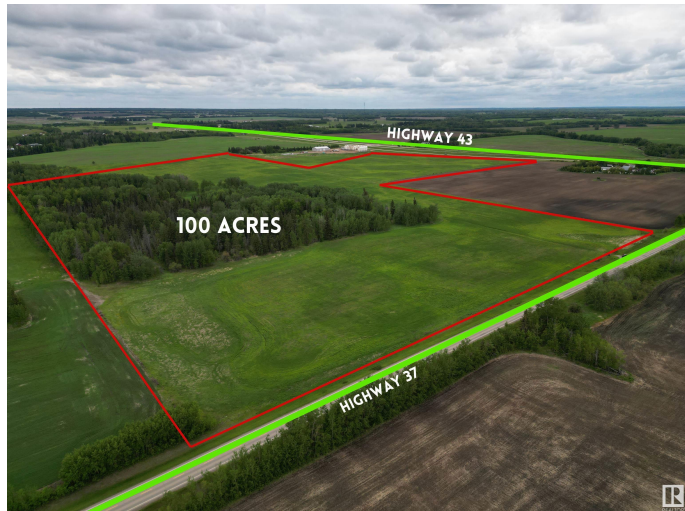
MLS® #E4416394

\$1,064,000

0 Bedroom, 0.00 Bathroom,
Rural on 100.00 Acres

None, Rural Lac Ste. Anne County, AB

Welcome to an exceptional opportunity with 100 acres of picturesque farmland located just 2 minutes west of Onoway, Alberta. This prime property boasts significant development potential, subject to MD approval. Featuring excellent highway frontage for easy access and visibility, the land includes approximately 80 acres of arable terrain, ideal for agriculture, alongside approximately 20 acres of lush bushland that adds natural beauty and privacy. The strategic location and diverse land composition make it perfect for future development projects. Don't miss this chance to invest in a versatile and highly desirable piece of real estate.



Essential Information

| | |
|-----------|-----------------|
| MLS® # | E4416394 |
| Price | \$1,064,000 |
| Bathrooms | 0.00 |
| Acres | 100.00 |
| Type | Rural |
| Sub-Type | Vacant Lot/Land |
| Status | Active |

Community Information

Address 54517 Range Road 22 B

| | |
|-------------|----------------------------|
| Area | Rural Lac Ste. Anne County |
| Subdivision | None |
| City | Rural Lac Ste. Anne County |
| County | ALBERTA |
| Province | AB |
| Postal Code | T0E 1V0 |

Exterior

Exterior Features See Remarks

Additional Information

Date Listed December 19th, 2024

Days on Market 120

Zoning Zone 70

DATA IS DEEMED RELIABLE BUT IS NOT GUARANTEED ACCURATE BY THE REALTORS® ASSOCIATION OF EDMONTON. COPYRIGHT 2025 BY THE REALTORS® ASSOCIATION OF EDMONTON. ALL RIGHTS RESERVED. Trademarks are owned or controlled by the Canadian Real Estate Association (CREA) and identify real estate professionals who are members of CREA (REALTOR®, REALTORS®) and/or the quality of services they provide (MLS®, Multiple Listing Service®)

Listing information last updated on April 18th, 2025 at 4:17pm MDT