

# \$734,900 - 1021 Downey Way, Edmonton

MLS® #E4416968

**\$734,900**

5 Bedroom, 3.50 Bathroom, 2,548 sqft  
Single Family on 0.00 Acres

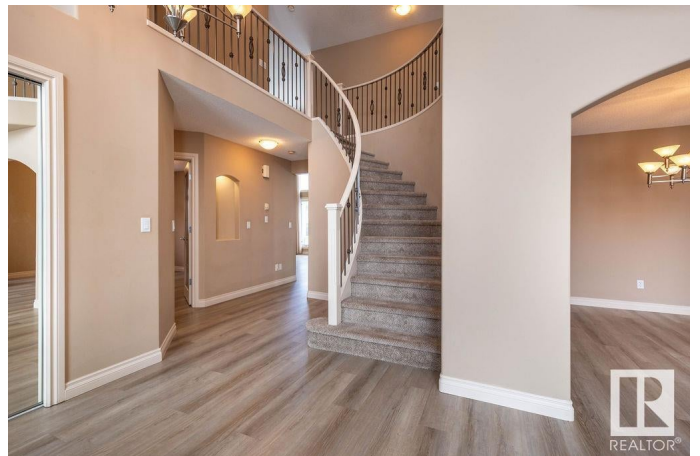
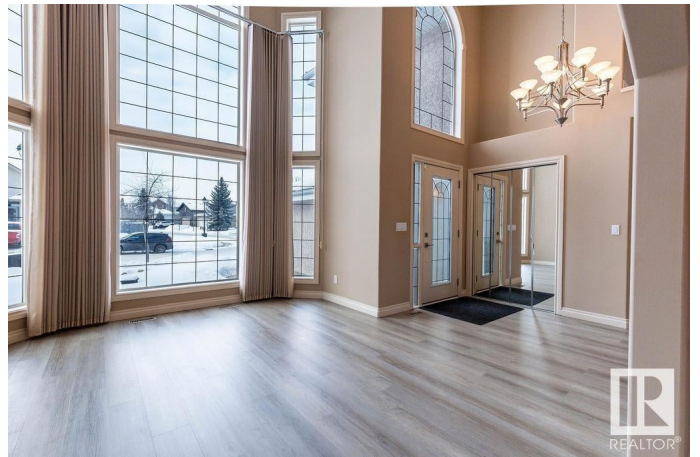
Donsdale, Edmonton, AB

AMAZING LOCATION in the prestigious Properties of Donsdale. Immerse yourself in nature. Beautiful walking trails, a pond and the river valley are steps away. This 6 bdrm family home is flooded with natural light and boasts soaring vaulted living spaces. The main floor generously holds a large eat in kitchen, family room with F/P, dining room, living room, laundry, 2 pce bathroom and a bedroom. The grand staircase takes you upstairs where you will find a large master suite with F/P feature and a 5 pce bath. 2 additional bedrooms and a 4 pce bath complete the upstairs. A fully finished basement holds 2 bdrms with large living space and 3 pce bath. This perfectly designed family dream home awaits your personal touches. Join this warm community and be surrounded by schools, parks, shopping and so much more.

Built in 2002

## Essential Information

MLS® #	E4416968
Price	\$734,900
Bedrooms	5
Bathrooms	3.50
Full Baths	3
Half Baths	1



Square Footage	2,548
Acres	0.00
Year Built	2002
Type	Single Family
Sub-Type	Detached Single Family
Style	2 Storey
Status	Active

### Community Information

Address	1021 Downey Way
Area	Edmonton
Subdivision	Donsdale
City	Edmonton
County	ALBERTA
Province	AB
Postal Code	T6M 2V4

### Amenities

Amenities	Deck, Detectors Smoke, No Animal Home, No Smoking Home, Vaulted Ceiling, Vinyl Windows, Natural Gas BBQ Hookup
Parking	Double Garage Attached

### Interior

Interior Features	ensuite bathroom
Appliances	Dishwasher-Built-In, Dryer, Garage Control, Garage Opener, Oven-Microwave, Refrigerator, Stove-Electric, Washer, Window Coverings
Heating	Forced Air-1, Natural Gas
Fireplace	Yes
Fireplaces	Mantel
Stories	3
Has Basement	Yes
Basement	Full, Finished

### Exterior

Exterior	Wood, Stucco
Exterior Features	Fenced, Fruit Trees/Shrubs, Landscaped, No Back Lane, Schools, Shopping Nearby
Roof	Asphalt Shingles

Construction	Wood, Stucco
Foundation	Concrete Perimeter

### **School Information**

Elementary	Centennial School
Middle	S. Bruce Smith School
High	Jasper Place School

### **Additional Information**

Date Listed	January 3rd, 2025
Days on Market	68
Zoning	Zone 20
HOA Fees	407.74
HOA Fees Freq.	Annually

DATA IS DEEMED RELIABLE BUT IS NOT GUARANTEED ACCURATE BY THE REALTORS® ASSOCIATION OF EDMONTON. COPYRIGHT 2025 BY THE REALTORS® ASSOCIATION OF EDMONTON. ALL RIGHTS RESERVED. Trademarks are owned or controlled by the Canadian Real Estate Association (CREA) and identify real estate professionals who are members of CREA (REALTOR®, REALTORS®) and/or the quality of services they provide (MLS®, Multiple Listing Service®)

Listing information last updated on March 12th, 2025 at 10:17am MDT