

\$280,000 - 137 10909 106 Street, Edmonton

MLS® #E4419591

\$280,000

1 Bedroom, 2.50 Bathroom, 1,273 sqft

Condo / Townhouse on 0.00 Acres

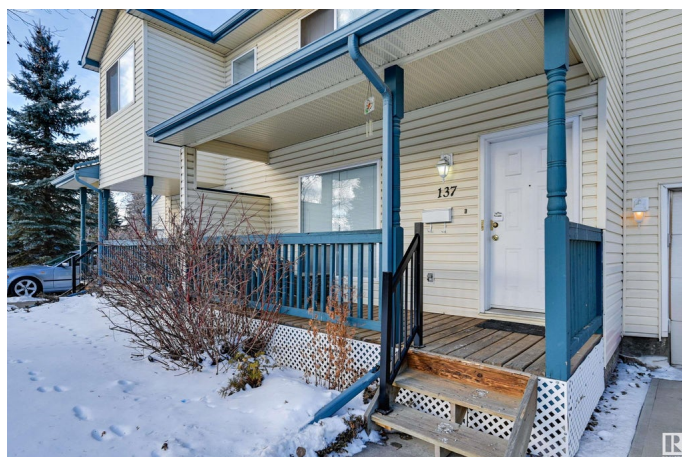
Central Mcdougall, Edmonton, AB

Prime Centrally Located Townhouse! Located minutes from downtown, this two-storey townhouse in McDougall Landing offers approximately 1,390 sq. ft. of living space across two levels, plus a basement. The property features a front porch, a single attached garage, and a rear deck. The main floor includes a spacious living room with a corner fireplace, a kitchen with an island and lots of storage, a dining area, and a 2-piece powder room. The upper level consists of a primary bedroom with a walk-in closet, two additional bedrooms, and a 4-piece bathroom. Situated in a well-maintained complex with mature tree-lined streets, the home is within walking distance of the LRT, MacEwan University, NAIT, Rogers Arena, Kingsway Mall, and the Royal Alexandra Hospital.

Built in 2002

Essential Information

MLS® #	E4419591
Price	\$280,000
Bedrooms	1
Bathrooms	2.50
Full Baths	2
Half Baths	1
Square Footage	1,273
Acres	0.00



Year Built	2002
Type	Condo / Townhouse
Sub-Type	Townhouse
Style	2 Storey
Status	Active

Community Information

Address	137 10909 106 Street
Area	Edmonton
Subdivision	Central Mcdougall
City	Edmonton
County	ALBERTA
Province	AB
Postal Code	T5H 4M7

Amenities

Amenities	See Remarks
Parking	Single Garage Attached

Interior

Interior Features	ensuite bathroom
Appliances	See Remarks
Heating	Forced Air-1, Natural Gas
Stories	3
Has Basement	Yes
Basement	Full, Partially Finished

Exterior

Exterior	Wood, Vinyl
Exterior Features	Landscaped, Playground Nearby, Schools, Shopping Nearby
Roof	Asphalt Shingles
Construction	Wood, Vinyl
Foundation	Concrete Perimeter

Additional Information

Date Listed	January 29th, 2025
Days on Market	89
Zoning	Zone 08
RE / Bank Owned	Yes

Condo Fee \$376

DATA IS DEEMED RELIABLE BUT IS NOT GUARANTEED ACCURATE BY THE REALTORS® ASSOCIATION OF EDMONTON. COPYRIGHT 2025 BY THE REALTORS® ASSOCIATION OF EDMONTON. ALL RIGHTS RESERVED.Trademarks are owned or controlled by the Canadian Real Estate Association (CREA) and identify real estate professionals who are members of CREA (REALTOR®, REALTORS®) and/or the quality of services they provide (MLS®, Multiple Listing Service®)

Listing information last updated on April 28th, 2025 at 8:17pm MDT