

# \$1,650,000 - Junction Of Twp 614a & Rge Rd 251, Rural Westlock County

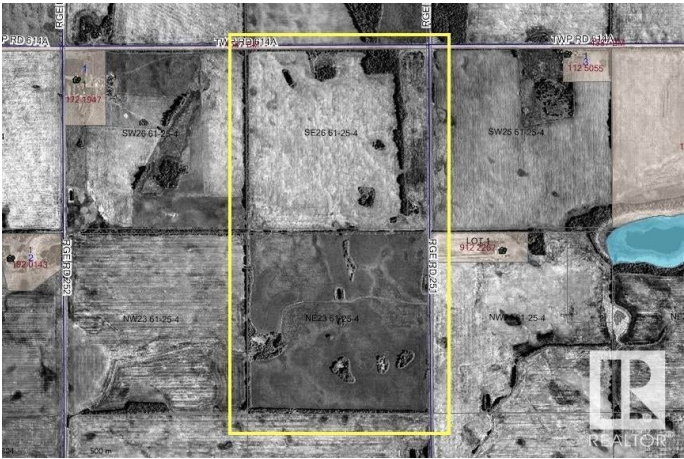
MLS® #E4420355

**\$1,650,000**

0 Bedroom, 0.00 Bathroom,  
Rural on 318.35 Acres

None, Rural Westlock County, AB

318 Acres of Farm Land consisting of 2 full quarter sections North of Westlock, AB in cereal crop rotation including Wheats and Canola. Professionally farmed with excellent yields and production. Approximately 300 to 305 acres currently cultivated. Dugout water source. Surface Lease Revenue source. Excellent building site courtesy of Homesteader yard site. Extended value for future potential subdivisions.



## Essential Information

MLS® #	E4420355
Price	\$1,650,000
Bathrooms	0.00
Acres	318.35
Type	Rural
Sub-Type	Vacant Lot/Land
Status	Active

## Community Information

Address	Junction Of Twp 614a & Rge
Area	Rural Westlock County
Subdivision	None
City	Rural Westlock County
County	ALBERTA

Province AB  
Postal Code T7P 2P4

Exterior

Exterior Features Corner Lot, Private Setting, See Remarks

Additional Information

Date Listed February 3rd, 2025  
Days on Market 74  
Zoning Zone 70

DATA IS DEEMED RELIABLE BUT IS NOT GUARANTEED ACCURATE BY THE REALTORS® ASSOCIATION OF EDMONTON. COPYRIGHT 2025 BY THE REALTORS® ASSOCIATION OF EDMONTON. ALL RIGHTS RESERVED.Trademarks are owned or controlled by the Canadian Real Estate Association (CREA) and identify real estate professionals who are members of CREA (REALTOR®, REALTORS®) and/or the quality of services they provide (MLS®, Multiple Listing Service®)  
Listing information last updated on April 18th, 2025 at 9:17am MDT