

# **\$149,900 - 110 10511 42 Avenue, Edmonton**

MLS® #E4420528

**\$149,900**

1 Bedroom, 1.00 Bathroom, 710 sqft

Condo / Townhouse on 0.00 Acres

Rideau Park (Edmonton), Edmonton, AB

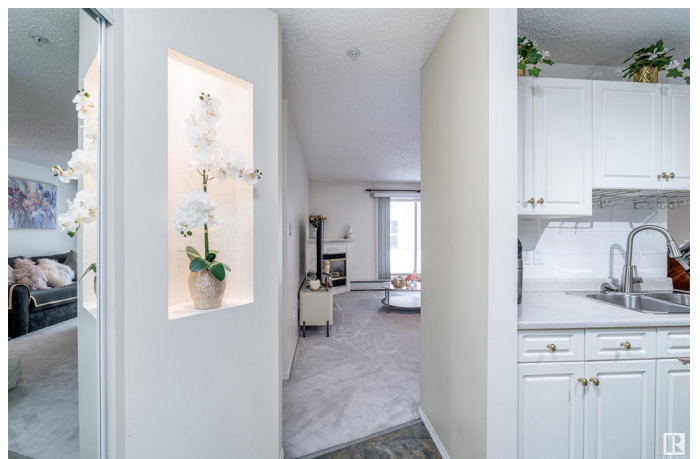
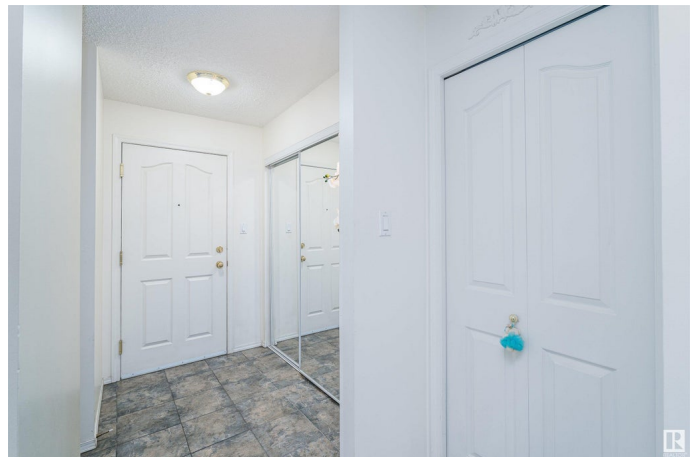
This affordable and meticulously maintained 1-bedroom condo is offering convenient access to Whitemud Drive, Highway 2, and public transit. Located near Southgate Mall and a variety of shopping options, it boasts an unbeatable location! You are welcomed by upgraded tile flooring in this thoughtfully designed unit, its unique layout that create a warm, inviting atmosphere. The spacious living room opens onto a serene patio that overlooks a tranquil courtyard. The kitchen features an abundance of counter space and cabinetry, and there's even space for bar stools for quick dining options. A dedicated dining area is conveniently positioned to the side, complementing the open-concept layout. The bedroom is generously sized, allowing space for a gaming setup or office desk. And a well-appointed 4-piece bathroom and laundry/storage area round out this unit. It comes with heated underground parking and storage cage, heat and water are included in the condo fees, making this a must-see property!

Built in 1998

## **Essential Information**

MLS® # E4420528

Price \$149,900



Bedrooms	1
Bathrooms	1.00
Full Baths	1
Square Footage	710
Acres	0.00
Year Built	1998
Type	Condo / Townhouse
Sub-Type	Lowrise Apartment
Style	Single Level Apartment
Status	Active

### **Community Information**

Address	110 10511 42 Avenue
Area	Edmonton
Subdivision	Rideau Park (Edmonton)
City	Edmonton
County	ALBERTA
Province	AB
Postal Code	T6J 7G8

### **Amenities**

Amenities	Detectors Smoke, Exercise Room, No Animal Home, No Smoking Home, Parking-Visitor, Party Room, Patio, Secured Parking, Social Rooms, Storage Cage
Parking	Heated, Underground

### **Interior**

Appliances	Dishwasher-Built-In, Hood Fan, Refrigerator, Stacked Washer/Dryer, Stove-Electric, Window Coverings
Heating	Baseboard, Natural Gas
# of Stories	4
Stories	4
Has Basement	Yes
Basement	None, No Basement

### **Exterior**

Exterior	Wood, Stucco
Exterior Features	Flat Site, Landscaped, Public Transportation, Schools, Shopping Nearby
Roof	Asphalt Shingles

Construction	Wood, Stucco
Foundation	Concrete Perimeter

**Additional Information**

Date Listed	February 6th, 2025
Days on Market	71
Zoning	Zone 16
Condo Fee	\$483

DATA IS DEEMED RELIABLE BUT IS NOT GUARANTEED ACCURATE BY THE REALTORS® ASSOCIATION OF EDMONTON. COPYRIGHT 2025 BY THE REALTORS® ASSOCIATION OF EDMONTON. ALL RIGHTS RESERVED.Trademarks are owned or controlled by the Canadian Real Estate Association (CREA) and identify real estate professionals who are members of CREA (REALTOR®, REALTORS®) and/or the quality of services they provide (MLS®, Multiple Listing Service®)

Listing information last updated on April 18th, 2025 at 5:02pm MDT