

Courtesy Of Loida Lumanlan Of RE/MAX River City

## \$498,000 - 14 Meadowview Way, Leduc

MLS® #E4420802

**\$498,000**

5 Bedroom, 3.50 Bathroom, 1,679 sqft  
Single Family on 0.00 Acres

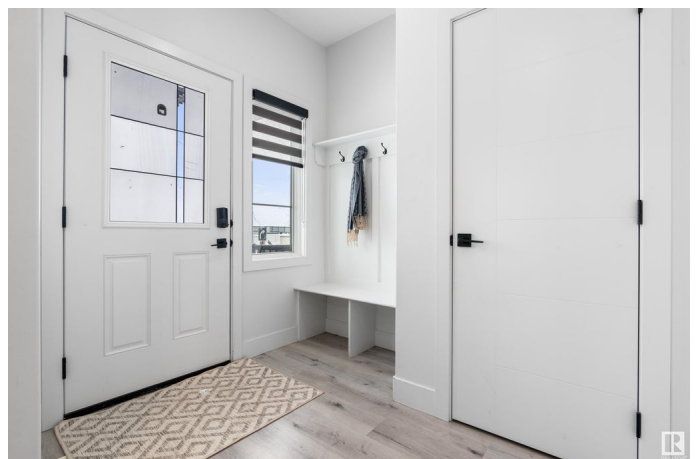
Meadowview Park\_LEDU, Leduc, AB

Welcome to this beautiful and modern 2-storey home with total of 5 bedrooms & 3.5 bathrooms and a fully finished LEGAL basement SUITE in Leduc. Enjoy the bright living room which is open to the dining room & kitchen. There is Vinyl plank flooring on all levels. The dining area can accommodate big dinner parties. The kitchen has all white cabinets & beautiful quartz countertop + an island for extra seating, or food prep area. There is a half bath in this level. The second level as a bonus room & the laundry area. The primary bedroom has a walk-in closet and a luxurious 4-piece bathroom with white quartz countertop (tile flooring). There are two more good size bedrooms on this level + a 2nd full bathroom. The finished basement SUITE has 2 bedrooms, a sitting area and a lovely 4-piece bathroom. There is a lane access detached garage. A private yard for your future garden plans. Minutes to Edmonton airport and outlet shops. Easy access to South Edmonton.

Built in 2020

### Essential Information

MLS® #	E4420802
Price	\$498,000
Bedrooms	5
Bathrooms	3.50



Full Baths	3
Half Baths	1
Square Footage	1,679
Acres	0.00
Year Built	2020
Type	Single Family
Sub-Type	Detached Single Family
Style	2 Storey
Status	Active

### **Community Information**

Address	14 Meadowview Way
Area	Leduc
Subdivision	Meadowview Park_LEDU
City	Leduc
County	ALBERTA
Province	AB
Postal Code	T9E 1M2

### **Amenities**

Amenities	See Remarks
Parking	Double Garage Detached

### **Interior**

Interior Features	ensuite bathroom
Appliances	Dishwasher-Built-In, Dryer, Hood Fan, Washer, Refrigerators-Two, Stoves-Two
Heating	Forced Air-1, Natural Gas
Stories	3
Has Basement	Yes
Basement	Full, Finished

### **Exterior**

Exterior	Wood, Stone
Exterior Features	Schools
Roof	Asphalt Shingles
Construction	Wood, Stone
Foundation	Concrete Perimeter

### **Additional Information**

Date Listed February 7th, 2025

Days on Market 35

Zoning Zone 81

DATA IS DEEMED RELIABLE BUT IS NOT GUARANTEED ACCURATE BY THE REALTORS® ASSOCIATION OF EDMONTON. COPYRIGHT 2025 BY THE REALTORS® ASSOCIATION OF EDMONTON. ALL RIGHTS RESERVED. Trademarks are owned or controlled by the Canadian Real Estate Association (CREA) and identify real estate professionals who are members of CREA (REALTOR®, REALTORS®) and/or the quality of services they provide (MLS®, Multiple Listing Service®)

Listing information last updated on March 13th, 2025 at 11:47pm MDT