

Courtesy Of Sam Killick and Jakie K Ng Of ARIVL

\$143,000 - 325 6220 134 Avenue, Edmonton

MLS® #E4420830

\$143,000

1 Bedroom, 1.00 Bathroom, 624 sqft
Condo / Townhouse on 0.00 Acres

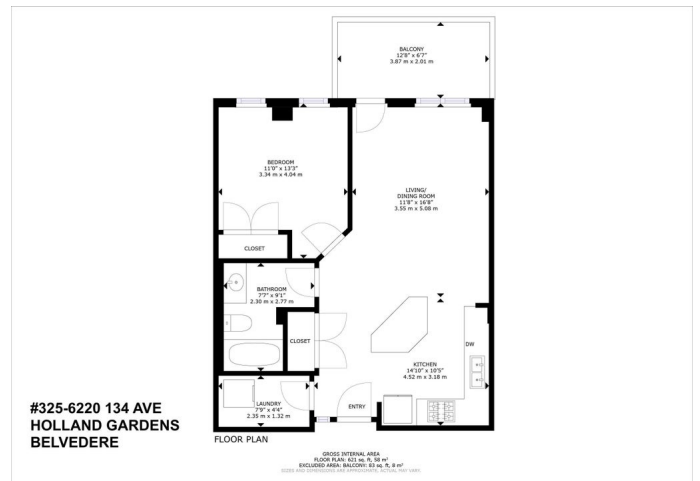
Belvedere, Edmonton, AB

ALL UTILITIES INCLUDED! INCREDIBLE 1 BED + 1 BATH CONDO IN A CONCRETE BUILDING WITH IN-SUITE LAUNDRY, UNDERGROUND PARKING & PET-FRIENDLY LIVING! Welcome to this bright, spacious turn-key home in the heart of Belvedere! This solid concrete building ensures superior soundproofing for a peaceful, quiet living experience. This well-designed unit features a modern kitchen with ample cabinet space, a spacious living area that opens to your private balcony, and a large bedroom with great closet space. Plus, IN-SUITE LAUNDRY, HEATED UNDERGROUND PARKING, and ALL UTILITIES INCLUDED add everyday convenience! Holland Gardens offers a fitness room and a welcoming, pet-friendly atmosphere. Steps from Londonderry Mall, grocery stores, transit, and major roadways like Yellowhead Trail & Manning Drive, this is the perfect spot for first-time buyers or investors. Fetch this deal before itâ€™s gone!

Built in 2006

Essential Information

MLS® #	E4420830
Price	\$143,000
Bedrooms	1
Bathrooms	1.00



Full Baths	1
Square Footage	624
Acres	0.00
Year Built	2006
Type	Condo / Townhouse
Sub-Type	Lowrise Apartment
Style	Single Level Apartment
Status	Active

Community Information

Address	325 6220 134 Avenue
Area	Edmonton
Subdivision	Belvedere
City	Edmonton
County	ALBERTA
Province	AB
Postal Code	T5A 0A8

Amenities

Amenities	Exercise Room, Intercom, Parking-Plug-Ins, Parking-Visitor, Vinyl Windows
Parking Spaces	1
Parking	Heated, Parkade, Underground

Interior

Appliances	Dishwasher-Built-In, Dryer, Garage Control, Microwave Hood Fan, Stove-Electric, Washer, Window Coverings
Heating	Baseboard, Hot Water, Natural Gas
# of Stories	4
Stories	4
Has Basement	Yes
Basement	None, No Basement

Exterior

Exterior	Concrete, Brick, Stucco
Exterior Features	Landscaped, Low Maintenance Landscape, Paved Lane, Picnic Area, Playground Nearby, Public Transportation, Schools, See Remarks
Roof	Asphalt Shingles
Construction	Concrete, Brick, Stucco

Foundation Concrete Perimeter

School Information

Elementary Belvedere School

Middle Balwin School

High M.E. LaZerte School

Additional Information

Date Listed February 7th, 2025

Days on Market 59

Zoning Zone 02

Condo Fee \$404

DATA IS DEEMED RELIABLE BUT IS NOT GUARANTEED ACCURATE BY THE REALTORS® ASSOCIATION OF EDMONTON. COPYRIGHT 2025 BY THE REALTORS® ASSOCIATION OF EDMONTON. ALL RIGHTS RESERVED. Trademarks are owned or controlled by the Canadian Real Estate Association (CREA) and identify real estate professionals who are members of CREA (REALTOR®, REALTORS®) and/or the quality of services they provide (MLS®, Multiple Listing Service®)

Listing information last updated on April 7th, 2025 at 9:02pm MDT