

\$489,900 - 513 1230 Windermere Way, Edmonton

MLS® #E4421461

\$489,900

2 Bedroom, 2.50 Bathroom, 1,472 sqft
Condo / Townhouse on 0.00 Acres

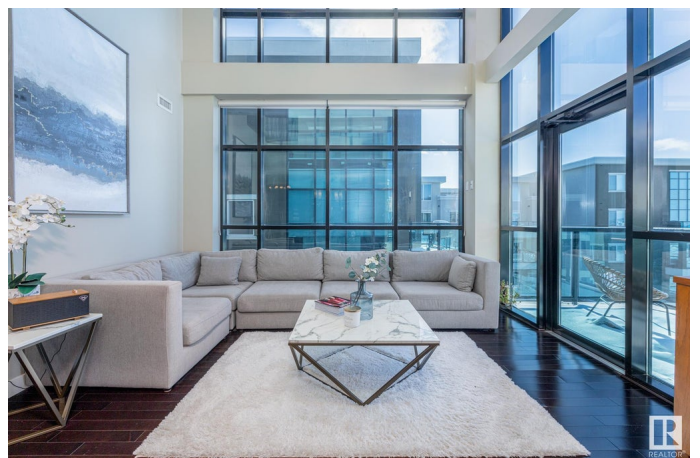
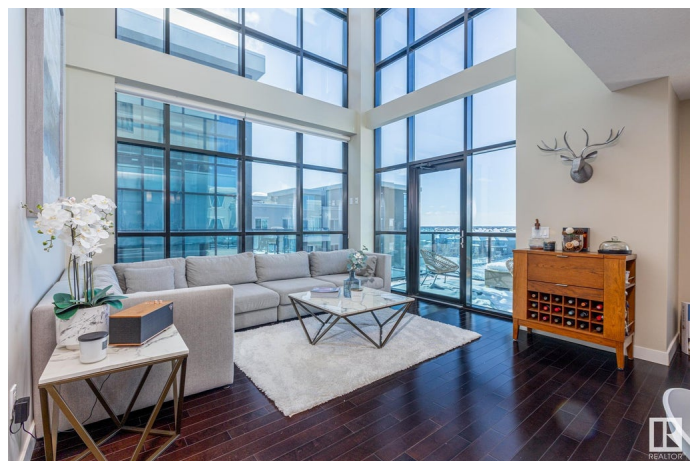
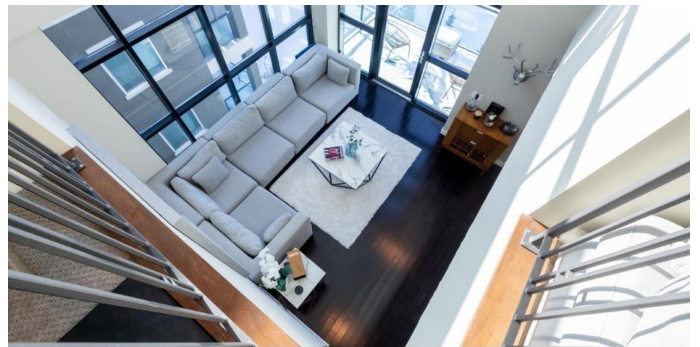
Windermere, Edmonton, AB

Refined living in this executive multi-level penthouse in Windermere. Perfectly positioned with SW exposure, this exceptional home offers breathtaking views overlooking the pond, with natural light pouring in through soaring 16 ft floor-to-ceiling windows. Two private patios, including an expansive rooftop terrace, create an unmatched indoor-outdoor lifestyle. Impressive main floor with stunning views and a spacious open concept. The gourmet kitchen is a chef's delight with granite countertops, espresso cabinetry, a large peninsula island and a walk-through pantry. Main floor primary is a serene retreat with a spa-inspired ensuite and walk-in closet. Upstairs, the loft offers versatility w/ a 2nd bedroom & full bath, making it an ideal space for guests or a stylish home office. 2 parking spots, in-suite laundry, storage, this home delivers on convenience. Steps from dining, shopping, river valley trails and easy access to the Henday & airport. Enjoy living in one of Edmonton's most desirable locations.

Built in 2011

Essential Information

MLS® #	E4421461
Price	\$489,900
Bedrooms	2



Bathrooms	2.50
Full Baths	2
Half Baths	1
Square Footage	1,472
Acres	0.00
Year Built	2011
Type	Condo / Townhouse
Sub-Type	Lowrise Apartment
Style	Penthouse
Status	Active

Community Information

Address	513 1230 Windermere Way
Area	Edmonton
Subdivision	Windermere
City	Edmonton
County	ALBERTA
Province	AB
Postal Code	T6W 2J3

Amenities

Amenities	Air Conditioner, No Animal Home, No Smoking Home, Parking-Visitor, Secured Parking, Security Door, Sprinkler System-Fire, Storage Cage, Rooftop Deck/Patio
Parking Spaces	2
Parking	Heated, Stall, Underground
Is Waterfront	Yes

Interior

Interior Features	ensuite bathroom
Appliances	Dishwasher-Built-In, Dryer, Fan-Ceiling, Hood Fan, Oven-Microwave, Refrigerator, Washer, Window Coverings, Stove-Induction
Heating	Forced Air-1, In Floor Heat System, Natural Gas
# of Stories	5
Stories	1
Has Basement	Yes
Basement	None, No Basement

Exterior

Exterior	Concrete, Stone, Stucco
Exterior Features	Backs Onto Lake, Commercial, Golf Nearby, Private Setting, Public Transportation, Schools, Shopping Nearby, View Lake
Roof	Tar & Gravel
Construction	Concrete, Stone, Stucco
Foundation	Concrete Perimeter

School Information

Elementary	Constable Daniel Woodall S
Middle	Riverbend School
High	Lillian Osborne School

Additional Information

Date Listed	February 13th, 2025
Days on Market	64
Zoning	Zone 56
Condo Fee	\$876

DATA IS DEEMED RELIABLE BUT IS NOT GUARANTEED ACCURATE BY THE REALTORS® ASSOCIATION OF EDMONTON. COPYRIGHT 2025 BY THE REALTORS® ASSOCIATION OF EDMONTON. ALL RIGHTS RESERVED. Trademarks are owned or controlled by the Canadian Real Estate Association (CREA) and identify real estate professionals who are members of CREA (REALTOR®, REALTORS®) and/or the quality of services they provide (MLS®, Multiple Listing Service®)

Listing information last updated on April 17th, 2025 at 11:32pm MDT