

# **\$984,900 - 532027 Range Road 180, Rural Lamont County**

MLS® #E4423395

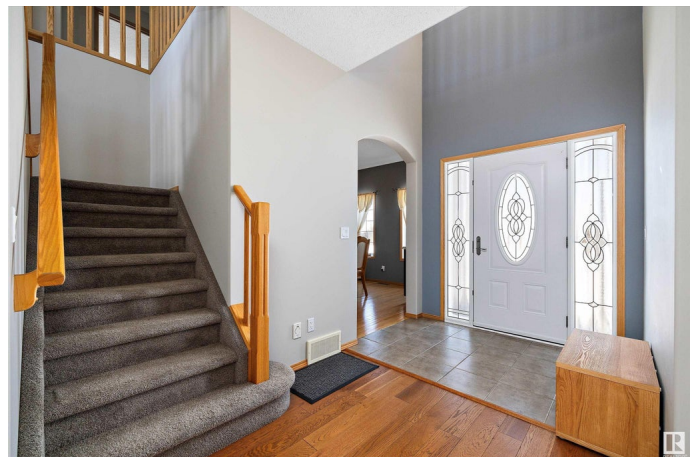
**\$984,900**

5 Bedroom, 3.50 Bathroom, 2,883 sqft

Rural on 80.00 Acres

None, Rural Lamont County, AB

This immaculate custom-built 2883 sq ft two storey home is on the market for the first time. Sitting on 80 fully fenced acres, it is a horse lover's dream. Built in 2006, it features an open concept design with a stunning tall ceiling in the living room, a beautiful staircase, and large windows bringing in natural light. The living room has an elegant rock wall, a gas fireplace, and hardwood flooring, while the main entrance and kitchen have ceramic tile. The kitchen features granite countertops, a ceramic backsplash, stainless steel appliances, an eat-up bar, and a dining area with picturesque views. Upstairs are four oversized bedrooms, including a primary with a four piece ensuite. The finished basement offers a wood-burning fireplace, a fifth bedroom, in-floor heating, laundry, and utility room. Outside has a 24x36 barn with lean-to storage, 30x40 shop with 220V, 22x24 garage, plus a double attached garage. The hot tub solarium is the perfect touch.



Built in 2006

## **Essential Information**

MLS® #	E4423395
Price	\$984,900
Bedrooms	5

Bathrooms	3.50
Full Baths	3
Half Baths	1
Square Footage	2,883
Acres	80.00
Year Built	2006
Type	Rural
Sub-Type	Detached Single Family
Style	2 Storey
Status	Active

### Community Information

Address	532027 Range Road 180
Area	Rural Lamont County
Subdivision	None
City	Rural Lamont County
County	ALBERTA
Province	AB
Postal Code	T0B 3H0

### Amenities

Features	Gazebo, Hot Tub, No Smoking Home, R.V. Storage
----------	------------------------------------------------

### Interior

Interior Features	ensuite bathroom
Heating	Forced Air-1, Natural Gas
Stories	3
Has Basement	Yes
Basement	Full, Finished

### Exterior

Exterior	Wood
Exterior Features	Fenced, Landscaped
Construction	Wood
Foundation	Concrete Perimeter

### Additional Information

Date Listed	February 28th, 2025
Days on Market	49

## Zoning

## Zone 60

DATA IS DEEMED RELIABLE BUT IS NOT GUARANTEED ACCURATE BY THE REALTORS® ASSOCIATION OF EDMONTON. COPYRIGHT 2025 BY THE REALTORS® ASSOCIATION OF EDMONTON. ALL RIGHTS RESERVED. Trademarks are owned or controlled by the Canadian Real Estate Association (CREA) and identify real estate professionals who are members of CREA (REALTOR®, REALTORS®) and/or the quality of services they provide (MLS®, Multiple Listing Service®)

Listing information last updated on April 18th, 2025 at 2:17pm MDT