

## \$675,000 - 311 55504 Rr 13, Rural Lac Ste. Anne County

MLS® #E4423851

**\$675,000**

3 Bedroom, 2.00 Bathroom, 1,584 sqft

Rural on 2.62 Acres

Tree Farm Estates, Rural Lac Ste. Anne County, AB

**IMMEDIATE POSSESSION! 2.62 ACRES** enveloped by a majestic treed paradise! Quality custom built walkout bungalow, just under 1600 sq ft, nestled in nature. Modern country charm, featuring a grand floor to ceiling wood burning stone fireplace. Beautiful vaulted ceilings, an open concept living, kitchen and dining that flow functionally and beautifully. Three bedrooms up, featuring a 5 pc spa-like ensuite, and a full 4 pc main bath. Unspoiled walkout basement is framed in for a 4th bedroom, laundry and a large future family room! The backyard oasis is adorned by the massive 12 x 22 deck on a concrete pad overlooking your trees of many varieties! The builder provides Progressive New Home Warranty. GST is included in the purchase price. Enjoy the breathtaking landscape, it's not as far out as you think! \*some photos are taken from a mirrored floorplan to highlight virtual options for placement of furniture\*

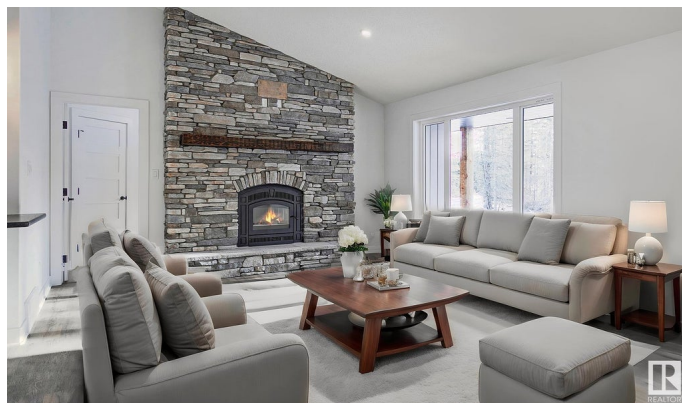
Built in 2024

### Essential Information

MLS® # E4423851

Price \$675,000

Bedrooms 3



Bathrooms	2.00
Full Baths	2
Square Footage	1,584
Acres	2.62
Year Built	2024
Type	Rural
Sub-Type	Detached Single Family
Style	Bungalow
Status	Active

### Community Information

Address	311 55504 Rr 13
Area	Rural Lac Ste. Anne County
Subdivision	Tree Farm Estates
City	Rural Lac Ste. Anne County
County	ALBERTA
Province	AB
Postal Code	T0E 1V0

### Amenities

Features	Closet Organizers, Front Porch, No Animal Home, No Smoking Home, Vaulted Ceiling, Vinyl Windows, Walkout Basement
----------	---

### Interior

Interior Features	ensuite bathroom
Heating	Forced Air-1, Natural Gas
Stories	2
Has Basement	Yes
Basement	Full, Unfinished

### Exterior

Exterior	Wood
Exterior Features	Backs Onto Park/Trees, No Back Lane, Park/Reserve, Private Setting, Recreation Use, Treed Lot
Construction	Wood
Foundation	Concrete Perimeter

### Additional Information

Date Listed	March 4th, 2025
-------------	-----------------

Days on Market 57

Zoning Zone 70

DATA IS DEEMED RELIABLE BUT IS NOT GUARANTEED ACCURATE BY THE REALTORS® ASSOCIATION OF EDMONTON. COPYRIGHT 2025 BY THE REALTORS® ASSOCIATION OF EDMONTON. ALL RIGHTS RESERVED. Trademarks are owned or controlled by the Canadian Real Estate Association (CREA) and identify real estate professionals who are members of CREA (REALTOR®, REALTORS®) and/or the quality of services they provide (MLS®, Multiple Listing Service®)

Listing information last updated on April 30th, 2025 at 11:17am MDT