

\$674,000 - 17828 109 Street, Edmonton

MLS® #E4424200

\$674,000

4 Bedroom, 3.50 Bathroom, 2,470 sqft

Single Family on 0.00 Acres

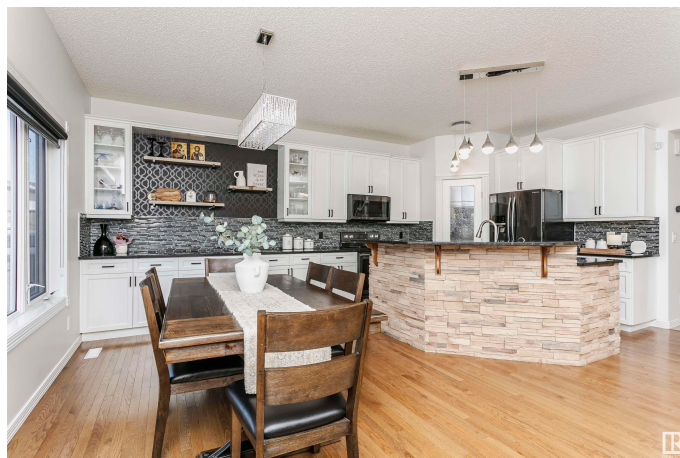
Chamberly, Edmonton, AB

This exquisite home has been completely renovated with elegance and sophistication. The main floor makes a statement with its open staircase, leading into a seamless living and dining space where bright white cabinetry and stone accents create a refined aesthetic. A cozy stone fireplace anchors the space, while a walk-through pantry and closet offer both style and function. A unique main-floor office or additional bedroom provides lots of flexibility. Upstairs, a spacious family room awaits, along with the stunning primary suite featuring a beautifully renovated 5-piece ensuite with a freestanding soaker tub. The fully finished basement is designed for entertainment, complete with a sleek bar, a fireplace-lit rec room, and a private cinema to enjoy movies in style. Outside, the backyard is an entertainer's dream, with a deck off the dining area, perfect for summer BBQs. This home is a true standout, offering luxury and comfort at every turn.

Built in 2005

Essential Information

MLS® #	E4424200
Price	\$674,000
Bedrooms	4
Bathrooms	3.50



Full Baths	3
Half Baths	1
Square Footage	2,470
Acres	0.00
Year Built	2005
Type	Single Family
Sub-Type	Detached Single Family
Style	2 Storey
Status	Active

Community Information

Address	17828 109 Street
Area	Edmonton
Subdivision	Chambery
City	Edmonton
County	ALBERTA
Province	AB
Postal Code	T5X 6K5

Amenities

Amenities	Air Conditioner, Bar, Deck, Exercise Room, No Animal Home, Sauna; Swirlpool; Steam
Parking	Double Garage Attached

Interior

Interior Features	ensuite bathroom
Appliances	Air Conditioning-Central, Alarm/Security System, Dishwasher-Built-In, Garage Control, Garage Opener, Microwave Hood Fan, Refrigerator, Storage Shed, Stove-Electric, Garage Heater
Heating	Forced Air-1, Natural Gas
Stories	3
Has Basement	Yes
Basement	Full, Finished

Exterior

Exterior	Wood, Stone
Exterior Features	Flat Site, Landscaped, Shopping Nearby
Roof	Asphalt Shingles
Construction	Wood, Stone

Foundation Concrete Perimeter

School Information

Elementary Baturyn School
Middle Mary Butterworth School
High Queen Elizabeth School

Additional Information

Date Listed March 6th, 2025
Days on Market 55
Zoning Zone 27



DATA IS DEEMED RELIABLE BUT IS NOT GUARANTEED ACCURATE BY THE REALTORS® ASSOCIATION OF EDMONTON. COPYRIGHT 2025 BY THE REALTORS® ASSOCIATION OF EDMONTON. ALL RIGHTS RESERVED.Trademarks are owned or controlled by the Canadian Real Estate Association (CREA) and identify real estate professionals who are members of CREA (REALTOR®, REALTORS®) and/or the quality of services they provide (MLS®, Multiple Listing Service®)
Listing information last updated on April 30th, 2025 at 10:47am MDT