

# \$139,702 - Nw 31-46-1-w5, Rural Wetaskiwin County

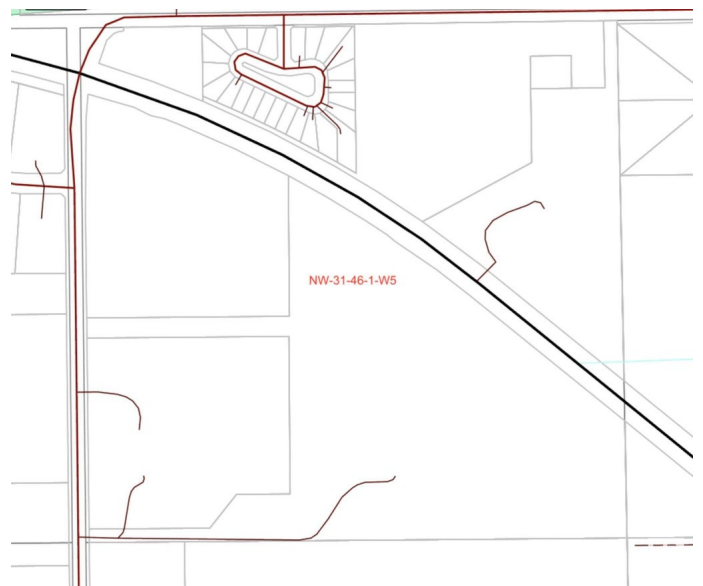
MLS® #E4424210

**\$139,702**

0 Bedroom, 0.00 Bathroom,  
Land Commercial on 0.00 Acres

Village at Pigeon Lake, Rural Wetaskiwin  
County, AB

2.94 ACRES. Zoned RC (Rural Commercial).  
Great Traffic Location. Prime for C-Store, Etc.



## Essential Information

MLS® #	E4424210
Price	\$139,702
Bathrooms	0.00
Acres	0.00
Type	Land Commercial
Status	Active

## Community Information

Address	Nw 31-46-1-w5
Area	Rural Wetaskiwin County
Subdivision	Village at Pigeon Lake
City	Rural Wetaskiwin County
County	ALBERTA
Province	AB
Postal Code	T0C 2C0

## Additional Information

Date Listed	March 5th, 2025
Days on Market	44
Zoning	Zone 95

DATA IS DEEMED RELIABLE BUT IS NOT GUARANTEED ACCURATE BY THE REALTORS® ASSOCIATION OF EDMONTON. COPYRIGHT 2025 BY THE REALTORS® ASSOCIATION OF EDMONTON. ALL RIGHTS

RESERVED. Trademarks are owned or controlled by the Canadian Real Estate Association (CREA) and identify real estate professionals who are members of CREA (REALTOR®®, REALTORS®®) and/or the quality of services they provide (MLS®®, Multiple Listing Service®®)

Listing information last updated on April 18th, 2025 at 6:17pm MDT