

# \$239,000 - 52229 Rge Road 15, Rural Parkland County

MLS® #E4425000

**\$239,000**

0 Bedroom, 0.00 Bathroom,  
Rural on 3.23 Acres

None, Rural Parkland County, AB

Beautiful treed lot! 3.23 acres, out of subdivision. Gas and power to the property line. Minutes away from Stony Plain, and in the Blueberry School Zone. Very private lot to build your dream home or operate your business from! West of Stony Plain on HWY 628 and south on RR 15

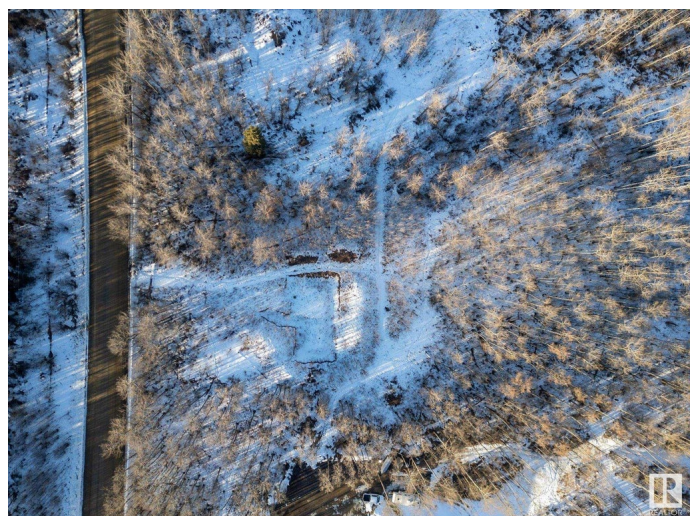
## Essential Information

|           |                 |
|-----------|-----------------|
| MLS® #    | E4425000        |
| Price     | \$239,000       |
| Bathrooms | 0.00            |
| Acres     | 3.23            |
| Type      | Rural           |
| Sub-Type  | Vacant Lot/Land |
| Status    | Active          |

## Community Information

|             |                       |
|-------------|-----------------------|
| Address     | 52229 Rge Road 15     |
| Area        | Rural Parkland County |
| Subdivision | None                  |
| City        | Rural Parkland County |
| County      | ALBERTA               |
| Province    | AB                    |
| Postal Code | T7Y 2E6               |

## Exterior



Exterior Features Golf Nearby, Private Setting, Treed Lot

### **Additional Information**

Date Listed March 7th, 2025

Days on Market 35

Zoning Zone 70

DATA IS DEEMED RELIABLE BUT IS NOT GUARANTEED ACCURATE BY THE REALTORS® ASSOCIATION OF EDMONTON. COPYRIGHT 2025 BY THE REALTORS® ASSOCIATION OF EDMONTON. ALL RIGHTS RESERVED. Trademarks are owned or controlled by the Canadian Real Estate Association (CREA) and identify real estate professionals who are members of CREA (REALTOR®, REALTORS®) and/or the quality of services they provide (MLS®, Multiple Listing Service®)

Listing information last updated on April 11th, 2025 at 10:48am MDT