

\$499,900 - 175 Edison Drive, St. Albert

MLS® #E4425660

\$499,900

3 Bedroom, 2.50 Bathroom, 1,570 sqft
Single Family on 0.00 Acres

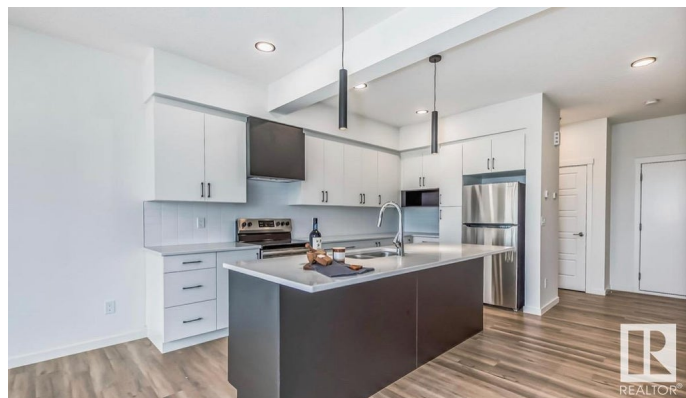
Erin Ridge North, St. Albert, AB

The UPTON is located in Prestigious Erin Ridge North! This stunning 2 Storey duplex features a stunning kitchen with massive island which leads to the large livingroom and dining area. The open concept main floor has plenty of room for relaxing with family and friends. Going upstairs you'll find 3 spacious bedrooms and a 4pce bathroom. The primary bedroom has a 5pce en-suite and an oversized walk-in closet. This home also features a double attached garage. This move in ready home is gorgeous top to bottom and is ready for you!

Built in 2023

Essential Information

MLS® #	E4425660
Price	\$499,900
Bedrooms	3
Bathrooms	2.50
Full Baths	2
Half Baths	1
Square Footage	1,570
Acres	0.00
Year Built	2023
Type	Single Family
Sub-Type	Half Duplex
Style	2 Storey



Status Active

Community Information

Address 175 Edison Drive
Area St. Albert
Subdivision Erin Ridge North
City St. Albert
County ALBERTA
Province AB
Postal Code T8N 4J6

Amenities

Amenities Detectors Smoke, Exterior Walls- 2"x6", No Smoking Home, See Remarks
Parking Spaces 5
Parking Double Garage Attached

Interior

Interior Features ensuite bathroom
Appliances Dishwasher-Built-In, Dryer, Garage Control, Garage Opener, Hood Fan, Refrigerator, Stove-Electric, Washer
Heating Forced Air-1, Natural Gas
Stories 2
Has Basement Yes
Basement Full, Unfinished

Exterior

Exterior Wood, Vinyl
Exterior Features Flat Site, Golf Nearby, Level Land, Public Transportation, Shopping Nearby, See Remarks
Roof Asphalt Shingles
Construction Wood, Vinyl
Foundation Concrete Perimeter

Additional Information

Date Listed March 14th, 2025
Days on Market 21
Zoning Zone 24

DATA IS DEEMED RELIABLE BUT IS NOT GUARANTEED ACCURATE BY THE REALTORS® ASSOCIATION OF EDMONTON. COPYRIGHT 2025 BY THE REALTORS® ASSOCIATION OF EDMONTON. ALL RIGHTS

RESERVED. Trademarks are owned or controlled by the Canadian Real Estate Association (CREA) and identify real estate professionals who are members of CREA (REALTOR®®, REALTORS®®) and/or the quality of services they provide (MLS®®, Multiple Listing Service®®)

Listing information last updated on April 4th, 2025 at 1:32am MDT