

Courtesy Of Ricky Singh Of MaxWell Polaris

\$494,900 - 3704 2 St, Edmonton

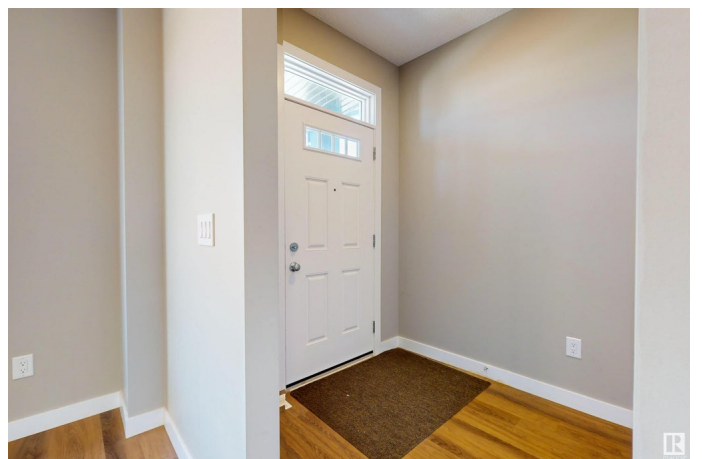
MLS® #E4426060

\$494,900

3 Bedroom, 2.50 Bathroom, 1,581 sqft
Single Family on 0.00 Acres

Maple Crest, Edmonton, AB

Welcome to this Bright & Stunning open layout property located in the community of MAPLE CREST. Home features a desirable 9-foot ceiling on the main floor, encompassing huge living and dining area, along with a gorgeous kitchen with stainless steel appliances & quartz countertop. As you enter, you'll be greeted by a spacious living area with a cozy fireplace with kitchen & a half washroom. Upstairs, you'll find a primary bedroom complete with an ensuite bathroom and a walk-in closet. Two additional bedrooms and another full bathroom, as well as convenient upstairs laundry facilities, complete the upper level. The basement is unfinished, offering endless potential for customization & has HRV system. Outside, the backyard has a good size deck & is landscaped with a low-maintenance garden. This property also includes a detached double car garage, adding both convenience and charm to this exceptional home. Quick access to Anthony henday drive. Very close to Rec centre, Shopping centres, schools & parks. MUST SEE!!



Built in 2021

Essential Information

MLS® #	E4426060
Price	\$494,900

Bedrooms	3
Bathrooms	2.50
Full Baths	2
Half Baths	1
Square Footage	1,581
Acres	0.00
Year Built	2021
Type	Single Family
Sub-Type	Detached Single Family
Style	2 Storey
Status	Active

Community Information

Address	3704 2 St
Area	Edmonton
Subdivision	Maple Crest
City	Edmonton
County	ALBERTA
Province	AB
Postal Code	T6T 2L8

Amenities

Amenities	Ceiling 9 ft., Deck, Detectors Smoke, No Animal Home, No Smoking Home, HRV System
Parking	Double Garage Detached

Interior

Interior Features	ensuite bathroom
Appliances	Dishwasher-Built-In, Dryer, Garage Control, Garage Opener, Microwave Hood Fan, Refrigerator, Stove-Electric, Washer, Window Coverings
Heating	Forced Air-1, Natural Gas
Fireplace	Yes
Fireplaces	See Remarks
Stories	2
Has Basement	Yes
Basement	Full, Unfinished

Exterior

Exterior	Wood, Vinyl
----------	-------------

Exterior Features	Back Lane, Landscaped, Playground Nearby, Schools, Shopping Nearby
Roof	Asphalt Shingles
Construction	Wood, Vinyl
Foundation	Concrete Perimeter

School Information

Elementary	A.BLAIR MCPHERSON
Middle	FATHER MICHAEL TROY
High	DR. FRANCIS WHISKEYJACK

Additional Information

Date Listed	March 17th, 2025
Days on Market	25
Zoning	Zone 30

DATA IS DEEMED RELIABLE BUT IS NOT GUARANTEED ACCURATE BY THE REALTORS® ASSOCIATION OF EDMONTON. COPYRIGHT 2025 BY THE REALTORS® ASSOCIATION OF EDMONTON. ALL RIGHTS RESERVED. Trademarks are owned or controlled by the Canadian Real Estate Association (CREA) and identify real estate professionals who are members of CREA (REALTOR®, REALTORS®) and/or the quality of services they provide (MLS®, Multiple Listing Service®)

Listing information last updated on April 11th, 2025 at 1:02am MDT