

\$199,900 - 406 13908 136 Street, Edmonton

MLS® #E4426189

\$199,900

2 Bedroom, 2.00 Bathroom, 794 sqft
Condo / Townhouse on 0.00 Acres

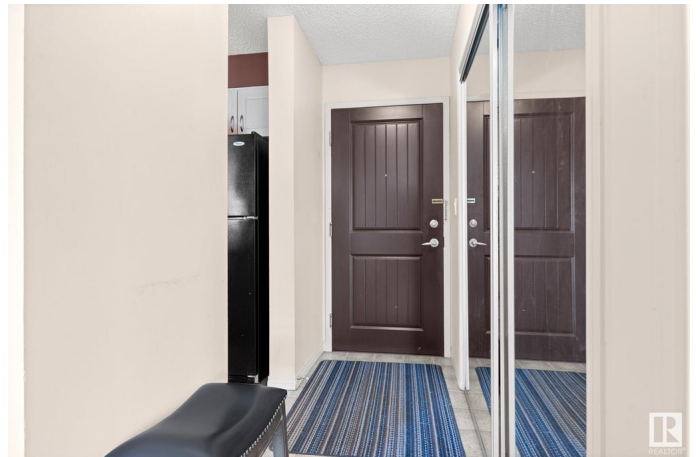
Hudson, Edmonton, AB

Top-floor living in Hudson Village! This 2-bedroom, 2-bathroom condo offers 793.92 sq ft of open-concept space with in-suite laundry, a storage room, and a private balcony with a natural gas hookup for your BBQ. Enjoy enhanced privacy, better views, and added desirability from the fourth floor. The carpet-free interior provides a modern, low-maintenance living space. The primary bedroom features a walk-through closet leading to a 4-piece ensuite, while the second bedroom is thoughtfully separated for privacy. Includes a heated underground parking stall, car wash bay, and bicycle storage. Condo fees cover heat, water, and ELECTRICITY for added value. Steps from Skyview Power Centre, shopping, dining, gyms, and transit, with quick access to the Henday, St. Albert Trail, and Yellowhead. Nearby parks, trails, and lakes offer outdoor enjoyment. Currently tenantedâ€”an excellent investment opportunity with immediate rental income!

Built in 2005

Essential Information

MLS® #	E4426189
Price	\$199,900
Bedrooms	2
Bathrooms	2.00



Full Baths	2
Square Footage	794
Acres	0.00
Year Built	2005
Type	Condo / Townhouse
Sub-Type	Lowrise Apartment
Style	Single Level Apartment
Status	Active

Community Information

Address	406 13908 136 Street
Area	Edmonton
Subdivision	Hudson
City	Edmonton
County	ALBERTA
Province	AB
Postal Code	T6V 1Y4

Amenities

Amenities	Intercom, No Animal Home, No Smoking Home, Parking-Visitor, Secured Parking, Security Door, Natural Gas BBQ Hookup
Parking Spaces	1
Parking	Heated, Underground

Interior

Interior Features	ensuite bathroom
Appliances	Dishwasher-Built-In, Garburator, Microwave Hood Fan, Refrigerator, Stacked Washer/Dryer, Stove-Electric, Window Coverings
Heating	Baseboard, Natural Gas
# of Stories	4
Stories	1
Has Basement	Yes
Basement	None, No Basement

Exterior

Exterior	Wood, Brick, Stucco
Exterior Features	Public Transportation, Schools, Shopping Nearby
Roof	Asphalt Shingles
Construction	Wood, Brick, Stucco

Foundation Concrete Perimeter

School Information

Elementary Hilwie Hamdon School
Middle Hilwie Hamdon School
High Ross Sheppard School

Additional Information

Date Listed March 18th, 2025
Days on Market 30
Zoning Zone 27
Condo Fee \$574

DATA IS DEEMED RELIABLE BUT IS NOT GUARANTEED ACCURATE BY THE REALTORS® ASSOCIATION OF EDMONTON. COPYRIGHT 2025 BY THE REALTORS® ASSOCIATION OF EDMONTON. ALL RIGHTS RESERVED. Trademarks are owned or controlled by the Canadian Real Estate Association (CREA) and identify real estate professionals who are members of CREA (REALTOR®, REALTORS®) and/or the quality of services they provide (MLS®, Multiple Listing Service®)

Listing information last updated on April 17th, 2025 at 4:47pm MDT