

Courtesy Of Kevin P Quintal Of RE/MAX Elite

\$219,900 - 12 55022 Ste. Anne Trail, Rural Lac Ste. Anne County

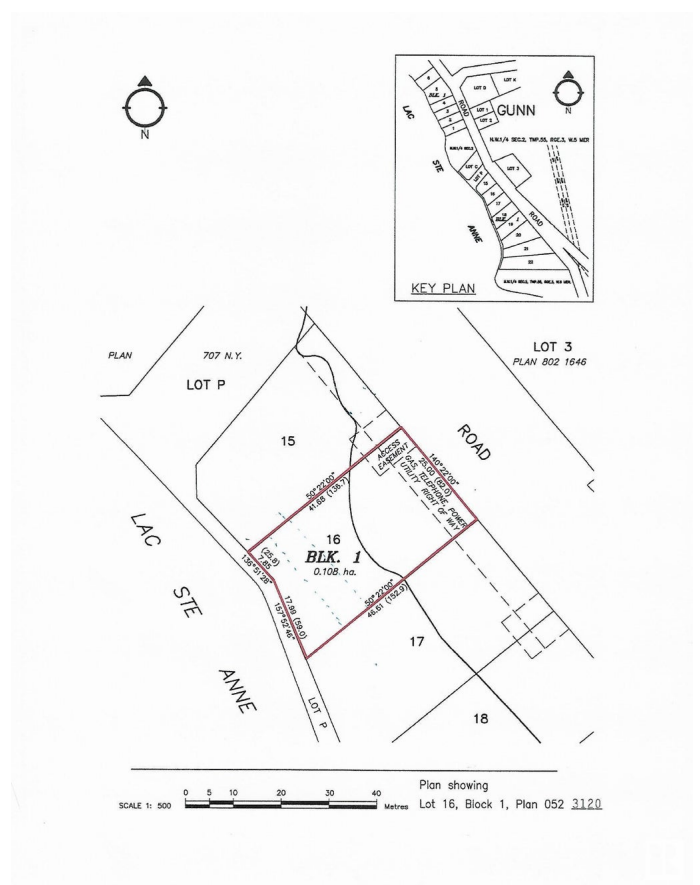
MLS® #E4427287

\$219,900

0 Bedroom, 0.00 Bathroom,
Rural on 0.27 Acres

Lakeside Estates (Lac Ste. Anne), Rural Lac Ste. Anne County, AB

Come view this hard to find 83' x 153' waterfront lot on the shores of Lac Ste Anne. Close to Gunn and Alberta Beach. All ready to build your dream home or your recreational getaway. Lot is West facing for maximum sun and great Sunsets!. Enjoy water sports with a sandy shore in front. Utilities are at the property line. Close to highway #43 and only 40 minutes NW of Edmonton for an easy commute. Hurry before it is gone.



Essential Information

MLS® #	E4427287
Price	\$219,900
Bathrooms	0.00
Acres	0.27
Type	Rural
Sub-Type	Vacant Lot/Land
Status	Active

Community Information

Address	12 55022 Ste. Anne Trail
Area	Rural Lac Ste. Anne County
Subdivision	Lakeside Estates (Lac Ste. Anne)
City	Rural Lac Ste. Anne County

County ALBERTA
Province AB
Postal Code T0E 1V0

Exterior

Exterior Features Backs Onto Lake, Boating, Flat Site, Lake Access Property, Lake View, Recreation Use, Shopping Nearby

Additional Information

Date Listed March 24th, 2025
Days on Market 10
Zoning Zone 70

DATA IS DEEMED RELIABLE BUT IS NOT GUARANTEED ACCURATE BY THE REALTORS® ASSOCIATION OF EDMONTON. COPYRIGHT 2025 BY THE REALTORS® ASSOCIATION OF EDMONTON. ALL RIGHTS RESERVED. Trademarks are owned or controlled by the Canadian Real Estate Association (CREA) and identify real estate professionals who are members of CREA (REALTOR®, REALTORS®) and/or the quality of services they provide (MLS®, Multiple Listing Service®)

Listing information last updated on April 2nd, 2025 at 10:02pm MDT