

Courtesy Of Cameron Benbow Of MaxWell Progressive

\$749,000 - 305 465044 Rge Road 60, Rural Wetaskiwin County

MLS® #E4427648

\$749,000

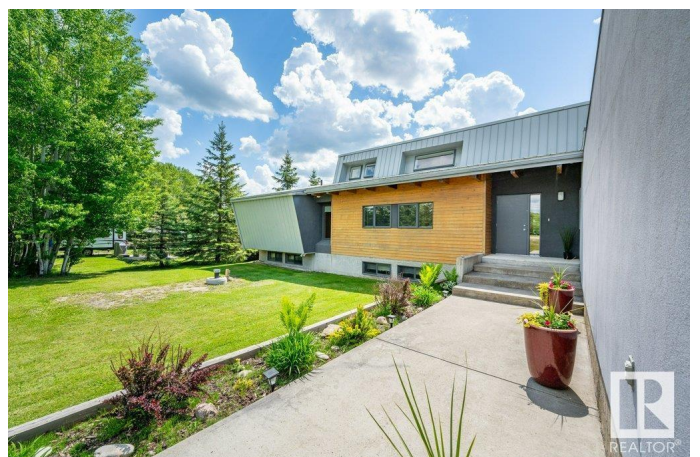
3 Bedroom, 2.00 Bathroom, 2,523 sqft
Rural on 0.46 Acres

Oakes Bay Estates, Rural Wetaskiwin County,
AB

Turnkey, Fully Furnished! This stunning waterfront cabin embodies West Coast modern design, seamlessly blending contemporary elegance with natural beauty. Situated on a waterfront lot, this property offers a tranquil escape from the hustle and bustle of everyday life. Step inside to discover an open concept living space flooded with natural light, featuring windows that frame panoramic water views. The sleek, modern kitchen is a chef's delight, boasting high-end appliances, quartz countertops, and a spacious island perfect for entertaining. A cozy living area, thoughtfully designed to maximize comfort and style. The master suite offers a private retreat with stunning lake views, 2 additional bedrooms provide ample space for family and guests. A 3-season sunroom is an ideal spot for alfresco dining or simply relaxing while taking in the stunning views. The large triple attached garage ensure plenty of space for all your seasonal toys and a full basement just waiting for your creative design.

Built in 2008

Essential Information



MLS® #	E4427648
Price	\$749,000
Bedrooms	3
Bathrooms	2.00
Full Baths	2
Square Footage	2,523
Acres	0.46
Year Built	2008
Type	Rural
Sub-Type	Detached Single Family
Style	Bungalow
Status	Active

Community Information

Address	305 465044 Rge Road 60
Area	Rural Wetaskiwin County
Subdivision	Oakes Bay Estates
City	Rural Wetaskiwin County
County	ALBERTA
Province	AB
Postal Code	T0C 0T0

Amenities

Features	Deck, Fire Pit, Hot Water Natural Gas, Lake Privileges, No Smoking Home, Vaulted Ceiling, 9 ft. Basement Ceiling
Parking Spaces	8

Interior

Heating	Forced Air-2, Natural Gas
Fireplace	Yes
Stories	1
Has Basement	Yes
Basement	Full, Unfinished

Exterior

Exterior	Wood
Exterior Features	Boating, Flat Site, Golf Nearby, Lake View, Level Land, No Through Road, Waterfront Property
Construction	Wood

Foundation Concrete Perimeter

Additional Information

Date Listed March 27th, 2025

Days on Market 14

Zoning Zone 96

HOA Fees 300

HOA Fees Freq. Annually

DATA IS DEEMED RELIABLE BUT IS NOT GUARANTEED ACCURATE BY THE REALTORS® ASSOCIATION OF EDMONTON. COPYRIGHT 2025 BY THE REALTORS® ASSOCIATION OF EDMONTON. ALL RIGHTS RESERVED. Trademarks are owned or controlled by the Canadian Real Estate Association (CREA) and identify real estate professionals who are members of CREA (REALTOR®, REALTORS®) and/or the quality of services they provide (MLS®, Multiple Listing Service®)

Listing information last updated on April 9th, 2025 at 11:02pm MDT