

\$874,000 - 36 54020 Hghway 779, Rural Parkland County

MLS® #E4428194

\$874,000

5 Bedroom, 3.00 Bathroom, 1,998 sqft

Rural on 5.00 Acres

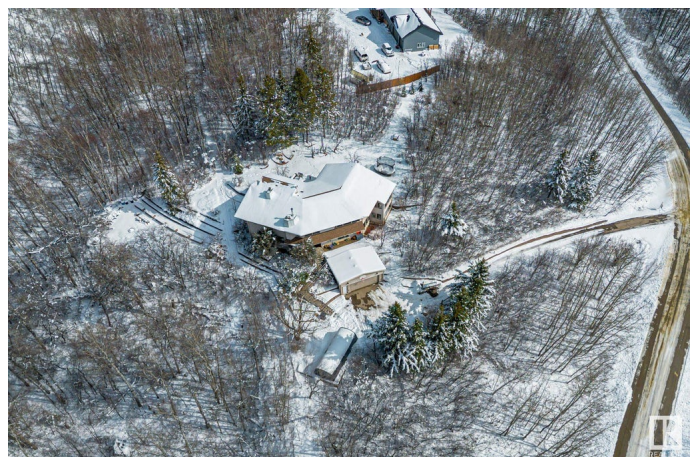
Cameron Lake Estates, Rural Parkland County, AB

This is a hillside home with two levels completed, 2000 sq ft on each. On the upper level there is very modern kitchen and Atrium off that room, and dinette, and a formal dining room. The living room is a monster and what a view of the countryside. It features a huge master bedroom with a steam shower in the 3 pc ensuite, It also features two fireplaces on that level one in the Master bedroom and one in the living room. The main walk-in level has three full sized bedrooms, a four piece bathroom and a super great Great room/games room. All 2000 sq ft on this level is used. Plus we have the lower level which is ground level and has entrance to the oversized double garage. It is all heated with infloor hot water heating.

Built in 1984

Essential Information

MLS® #	E4428194
Price	\$874,000
Bedrooms	5
Bathrooms	3.00
Full Baths	3
Square Footage	1,998
Acres	5.00
Year Built	1984



Type	Rural
Sub-Type	Detached Single Family
Style	Hillside Bungalow
Status	Active

Community Information

Address	36 54020 Highway 779
Area	Rural Parkland County
Subdivision	Cameron Lake Estates
City	Rural Parkland County
County	ALBERTA
Province	AB
Postal Code	T7Y 0A9

Amenities

Features	Ceiling 9 ft., Deck, Exterior Walls- 2"x6", Fire Pit, Sunroom, Vaulted Ceiling, Walkout Basement, Exterior Walls 2"x8"
----------	--

Interior

Interior Features	ensuite bathroom
Heating	In Floor Heat System, Natural Gas
Stories	2
Has Basement	Yes
Basement	Full, Partially Finished

Exterior

Exterior	Wood
Exterior Features	Cul-De-Sac, Golf Nearby, Hillside, Low Maintenance Landscape, Private Setting, Rolling Land, Treed Lot
Construction	Wood
Foundation	Preserved Wood

Additional Information

Date Listed	March 29th, 2025
Days on Market	25
Zoning	Zone 70

DATA IS DEEMED RELIABLE BUT IS NOT GUARANTEED ACCURATE BY THE REALTORS® ASSOCIATION OF EDMONTON. COPYRIGHT 2025 BY THE REALTORS® ASSOCIATION OF EDMONTON. ALL RIGHTS RESERVED. Trademarks are owned or controlled by the Canadian Real Estate Association (CREA) and identify real estate professionals who are members of CREA (REALTOR®, REALTORS®) and/or the quality of services they

provide (MLS® , Multiple Listing Service®)

Listing information last updated on April 23rd, 2025 at 10:17am MDT