

\$485,000 - 27329 Twp Rd 590, Rural Westlock County

MLS® #E4428429

\$485,000

3 Bedroom, 1.00 Bathroom, 1,512 sqft
Rural on 10.08 Acres

None, Rural Westlock County, AB

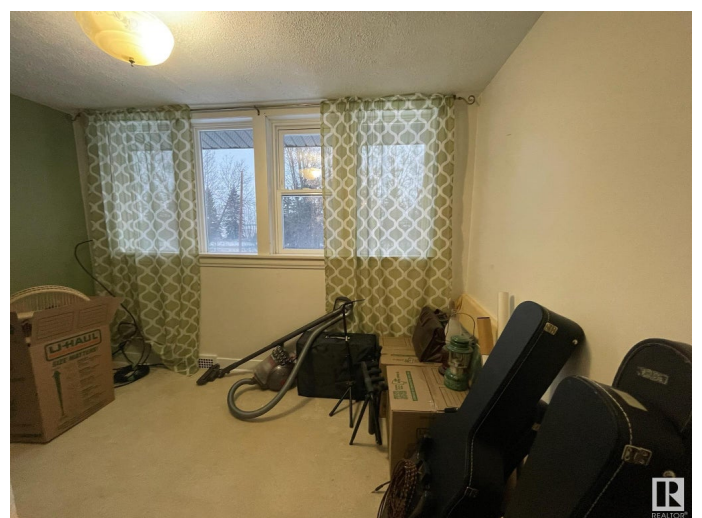
Fantastic family acreage much to offer - note wonderful privacy with all the trees & how it feels like an oasis. Newly seeded pasture & corral for horses or summer calves plus insulated chicken coop to provide fresh, farm eggs. Check this out: 1510 sq. ft. of beautifully-cared for home. New paint up, down & around. Sweet kitchen w/lovely paint on oak cabinets open to huge dining room. Big living rm, spacious front entry could be mudroom/playroom/office or? Huge bathroom w/separate tub & shower. Upper level - primary suite w/wall of walk-in closets, 2 more sweet bdrms plus small flex room. Bsmt is wide open - laundry area, utility area & space for fmly room/bdrm. Furnace 2022, pressure tank 2023, heat vents & fresh air vents to upper rooms, washer/dryer 2023, weeping tile & sump pump plus list of many upgraded items that will be provided. Outside you'll find a lovely yard w/huge new garden area, 40'x70' quonset, 30'x50' shop with two overhead doors, solid wood insulated walls & ceiling. Much more to see!

Built in 1946

Essential Information

MLS® # E4428429

Price \$485,000



Bedrooms	3
Bathrooms	1.00
Full Baths	1
Square Footage	1,512
Acres	10.08
Year Built	1946
Type	Rural
Sub-Type	Detached Single Family
Style	1 and Half Storey
Status	Active

Community Information

Address	27329 Twp Rd 590
Area	Rural Westlock County
Subdivision	None
City	Rural Westlock County
County	ALBERTA
Province	AB
Postal Code	T0G 1W0

Amenities

Features	Closet Organizers, No Smoking Home
Parking Spaces	12

Interior

Heating	Forced Air-1, Natural Gas
Stories	2
Has Basement	Yes
Basement	Full, See Remarks

Exterior

Exterior	Wood
Exterior Features	Low Maintenance Landscape, Partially Landscaped, Private Setting, Treed Lot, Vegetable Garden
Construction	Wood
Foundation	Concrete Perimeter

Additional Information

Date Listed	March 29th, 2025
-------------	------------------

Days on Market 6

Zoning Zone 70

DATA IS DEEMED RELIABLE BUT IS NOT GUARANTEED ACCURATE BY THE REALTORS® ASSOCIATION OF EDMONTON. COPYRIGHT 2025 BY THE REALTORS® ASSOCIATION OF EDMONTON. ALL RIGHTS RESERVED. Trademarks are owned or controlled by the Canadian Real Estate Association (CREA) and identify real estate professionals who are members of CREA (REALTOR®, REALTORS®) and/or the quality of services they provide (MLS®, Multiple Listing Service®)

Listing information last updated on April 4th, 2025 at 2:47pm MDT