

Courtesy Of Shauna Allen Of Royal Lepage Benchmark

\$600,000 - 10 Deer Park Bay, Spruce Grove

MLS® #E4428502

\$600,000

3 Bedroom, 3.50 Bathroom, 1,890 sqft
Single Family on 0.00 Acres

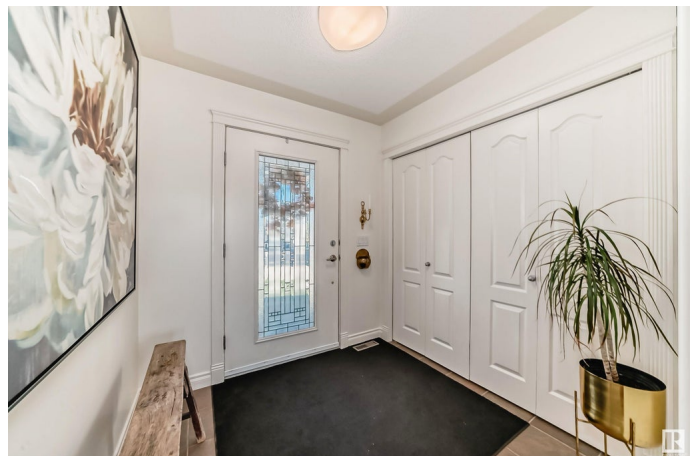
Deer Park_SPGR, Spruce Grove, AB

Hello, Gorgeous! Nestled in a quiet crescent in the desirable Deer Park neighbourhood, this 2-storey home offers 3 spacious bedrooms, 4 bathrooms, and 1890 sqft of beautifully designed living space. Enjoy the updated kitchen with sleek counters and an open layout perfect for entertaining. The bright living room features a gas fireplace with a stunning waterfall mantle. Upstairs, find a large bonus room with a custom entertainment unit and a luxurious primary suite with an oversized double head steam shower. The partly finished basement includes a full bath, & laundry, providing flexibility for your needs. Outside, your private oasis awaits with a professionally designed backyard, reflective pond with waterfall, deck, a large patio, and built-in BBQ gas hookup. Additional features include cherry hardwood, a drywalled & insulated double garage with drain, an irrigation system, & wired for sound. With space, style, and comfort, this home is a must-see! Check out the virtual tour

Built in 2004

Essential Information

| | |
|-----------|-----------|
| MLS® # | E4428502 |
| Price | \$600,000 |
| Bedrooms | 3 |
| Bathrooms | 3.50 |



| | |
|----------------|------------------------|
| Full Baths | 3 |
| Half Baths | 1 |
| Square Footage | 1,890 |
| Acres | 0.00 |
| Year Built | 2004 |
| Type | Single Family |
| Sub-Type | Detached Single Family |
| Style | 2 Storey |
| Status | Active |

Community Information

| | |
|-------------|------------------|
| Address | 10 Deer Park Bay |
| Area | Spruce Grove |
| Subdivision | Deer Park_SPGR |
| City | Spruce Grove |
| County | ALBERTA |
| Province | AB |
| Postal Code | T7X 4N7 |

Amenities

| | |
|----------------|--|
| Amenities | Deck, Detectors Smoke, No Smoking Home |
| Parking Spaces | 4 |
| Parking | Double Garage Attached |

Interior

| | |
|-------------------|---|
| Interior Features | ensuite bathroom |
| Appliances | Dishwasher-Built-In, Dryer, Fan-Ceiling, Freezer, Garage Control, Garage Opener, Garburator, Hood Fan, Humidifier-Power(Furnace), Refrigerator, Storage Shed, Stove-Gas, Washer, Window Coverings, Wine/Beverage Cooler |
| Heating | Forced Air-1, Natural Gas |
| Fireplace | Yes |
| Fireplaces | Stone Facing |
| Stories | 2 |
| Has Basement | Yes |
| Basement | Full, Partially Finished |

Exterior

| | |
|----------|-----------------------------|
| Exterior | Wood, Asphalt, Stone, Vinyl |
|----------|-----------------------------|

| | |
|-------------------|--|
| Exterior Features | Backs Onto Park/Trees, Fenced, Fruit Trees/Shrubs, Golf Nearby, Landscaped, Private Setting, Schools, Shopping Nearby, Treed Lot |
| Roof | Asphalt Shingles |
| Construction | Wood, Asphalt, Stone, Vinyl |
| Foundation | Concrete Perimeter |

Additional Information

| | |
|----------------|-----------------|
| Date Listed | April 1st, 2025 |
| Days on Market | 2 |
| Zoning | Zone 91 |

DATA IS DEEMED RELIABLE BUT IS NOT GUARANTEED ACCURATE BY THE REALTORS® ASSOCIATION OF EDMONTON. COPYRIGHT 2025 BY THE REALTORS® ASSOCIATION OF EDMONTON. ALL RIGHTS RESERVED. Trademarks are owned or controlled by the Canadian Real Estate Association (CREA) and identify real estate professionals who are members of CREA (REALTOR®, REALTORS®) and/or the quality of services they provide (MLS®, Multiple Listing Service®)

Listing information last updated on April 3rd, 2025 at 9:02pm MDT