

\$349,000 - 19321 Twp 514, Rural Beaver County

MLS® #E4429058

\$349,000

4 Bedroom, 2.00 Bathroom, 1,561 sqft

Rural on 3.46 Acres

Country Squire, Rural Beaver County, AB

Experience peaceful country living just 25 minutes from Sherwood Park! Nestled on 3.46 fully fenced acres in Country Squires, Beaver County, this property offers the perfect escape from city life. Inside, you'll find new luxury vinyl plank flooring, an open-concept living space, and four spacious bedrooms. The primary suite features a walkin closet and ensuite, thoughtfully separated from the other bedrooms for added privacy. The oversized double garage is ready for whatever you have planned, with a gas line already in place for easy heating, making it a versatile workspace for any project. The property is fully sectioned and fenced into three areas, making it ideal for a variety of uses for whatever your family can dream of. Plus, a spacious covered deck lets you enjoy the outdoors just as much as the comfort of your home, rain or shine. Backing onto peaceful farmland, this home is ready for its next owners to make it their own. Donâ€™t miss this opportunity to enjoy country living with modern conveniences

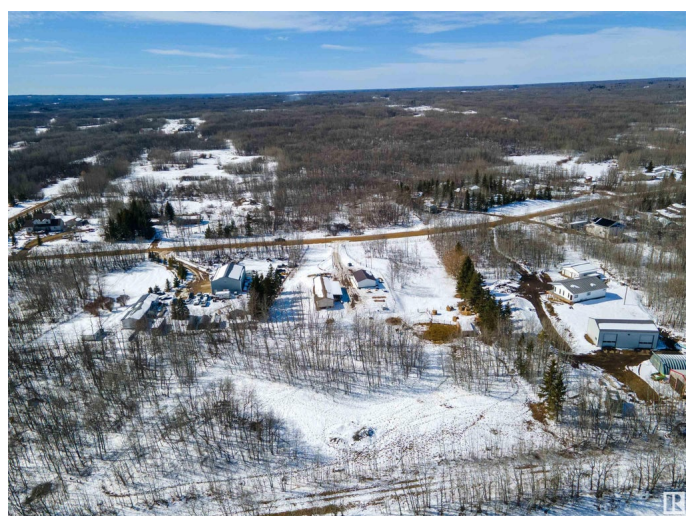
Built in 2005

Essential Information

MLS® # E4429058

Price \$349,000

Bedrooms 4



Bathrooms	2.00
Full Baths	2
Square Footage	1,561
Acres	3.46
Year Built	2005
Type	Rural
Sub-Type	Detached Single Family
Style	Bungalow
Status	Active

Community Information

Address	19321 Twp 514
Area	Rural Beaver County
Subdivision	Country Squire
City	Rural Beaver County
County	ALBERTA
Province	AB
Postal Code	T0B 4S0

Amenities

Features	Air Conditioner, Closet Organizers, Deck, Smart/Program. Thermostat, Vaulted Ceiling, Vinyl Windows
Parking Spaces	10

Interior

Interior Features	ensuite bathroom
Heating	Forced Air-1, Natural Gas
Stories	1
Has Basement	Yes
Basement	None, No Basement

Exterior

Exterior	Modular
Exterior Features	Cross Fenced, Cul-De-Sac, Fenced, No Through Road, Partially Landscaped, Picnic Area, Schools
Construction	Modular
Foundation	Concrete Perimeter

Additional Information

Date Listed April 4th, 2025

Days on Market 14

Zoning Zone 80

DATA IS DEEMED RELIABLE BUT IS NOT GUARANTEED ACCURATE BY THE REALTORS® ASSOCIATION OF EDMONTON. COPYRIGHT 2025 BY THE REALTORS® ASSOCIATION OF EDMONTON. ALL RIGHTS RESERVED. Trademarks are owned or controlled by the Canadian Real Estate Association (CREA) and identify real estate professionals who are members of CREA (REALTOR®, REALTORS®) and/or the quality of services they provide (MLS®, Multiple Listing Service®)

Listing information last updated on April 18th, 2025 at 4:32pm MDT