

\$490,000 - 17336 6 Avenue, Edmonton

MLS® #E4429562

\$490,000

3 Bedroom, 2.50 Bathroom, 1,252 sqft

Single Family on 0.00 Acres

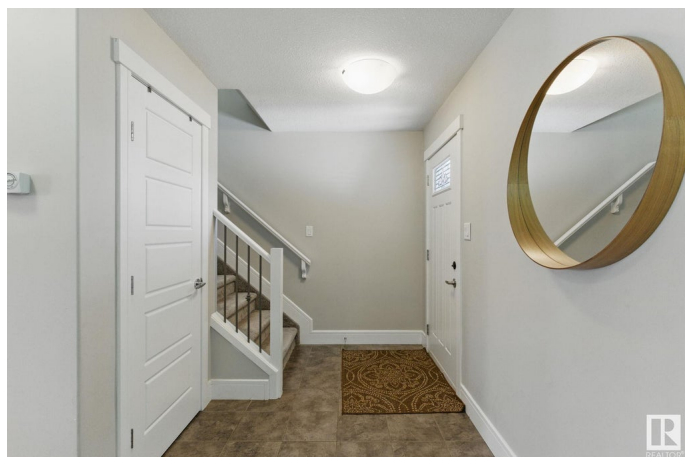
Windermere, Edmonton, AB

Welcome to the highly sought after neighbourhood of Windermere! This 3 bedroom, 2.5 bath home is situated in a quiet, family friendly cul-de-sac. The main floor boasts tons of natural light, an open floor plan, granite counter tops, durable vinyl plank flooring, stainless steel appliances, gas fireplace, and a spacious pantry. Step out onto the deck and enjoy the oversized yard. High fences and quiet neighbours ensure a peaceful outdoor experience. Upstairs you will find the MASSIVE primary bedroom, with 4 large windows, offering tons of sunshine all day long, a walk in closet, and 3 piece en suite. Two additional large bedrooms, and a 4 piece bathroom finish off the upper level. The basement has been framed and inspected, and is ready for your finishing touch!

Built in 2012

Essential Information

MLS® #	E4429562
Price	\$490,000
Bedrooms	3
Bathrooms	2.50
Full Baths	2
Half Baths	1
Square Footage	1,252
Acres	0.00



Year Built	2012
Type	Single Family
Sub-Type	Half Duplex
Style	2 Storey
Status	Active

Community Information

Address	17336 6 Avenue
Area	Edmonton
Subdivision	Windermere
City	Edmonton
County	ALBERTA
Province	AB
Postal Code	T6W 2A7

Amenities

Amenities	On Street Parking, Closet Organizers, Deck, Detectors Smoke, Hot Water Instant, No Smoking Home, See Remarks
Parking Spaces	4
Parking	Double Garage Attached

Interior

Interior Features	ensuite bathroom
Appliances	Dishwasher-Built-In, Dryer, Garage Control, Garage Opener, Microwave Hood Fan, Refrigerator, Stove-Electric, Washer, Window Coverings
Heating	Forced Air-1, Natural Gas
Stories	2
Has Basement	Yes
Basement	Full, Unfinished

Exterior

Exterior	Wood, Vinyl
Exterior Features	Airport Nearby, Cul-De-Sac, Fenced, Flat Site, Fruit Trees/Shrubs, Golf Nearby, Playground Nearby, Public Transportation, Schools, Shopping Nearby, Ski Hill Nearby
Roof	Asphalt Shingles
Construction	Wood, Vinyl
Foundation	Concrete Perimeter

School Information

Elementary	Constable Daniel Woodall
Middle	Riverbend
High	Lillian Osborne

Additional Information

Date Listed	April 7th, 2025
Days on Market	12
Zoning	Zone 56

DATA IS DEEMED RELIABLE BUT IS NOT GUARANTEED ACCURATE BY THE REALTORS® ASSOCIATION OF EDMONTON. COPYRIGHT 2025 BY THE REALTORS® ASSOCIATION OF EDMONTON. ALL RIGHTS RESERVED.Trademarks are owned or controlled by the Canadian Real Estate Association (CREA) and identify real estate professionals who are members of CREA (REALTOR®, REALTORS®) and/or the quality of services they provide (MLS®, Multiple Listing Service®)

Listing information last updated on April 19th, 2025 at 1:02am MDT