

\$3,800,000 - 1450 34 Street, Edmonton

MLS® #E4429785

\$3,800,000

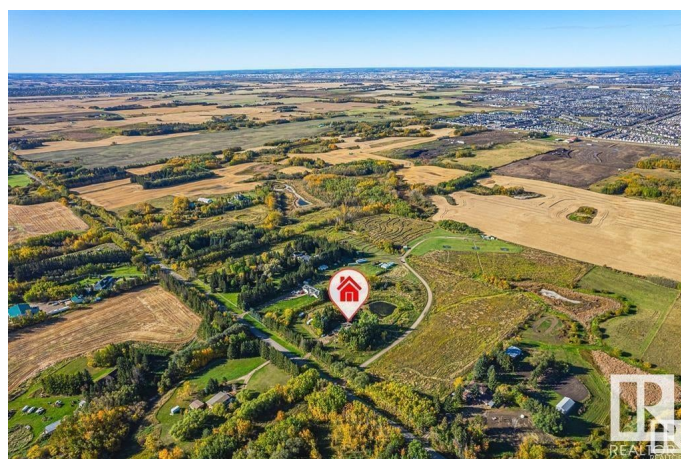
0 Bedroom, 0.00 Bathroom,
Land Commercial on 0.00 Acres

Meltwater, Edmonton, AB

VERY RARE OFFERING! 19.9 ACRES OF VERY ATTRACTIVE RE-DEVELOPMENT LAND LOCATED ONE MINUTE SOUTH OF THE NEW SOUTH EDMONTON CHARLESWORTH NEIGHBOURHOOD! This is a great opportunity for the new owner of this beautiful parcel of land. The property boasts a WALK-OUT BI-LEVEL WITH 4 BEDROOMS AND WALK-OUT BASEMENT along with a large double attached garage. The land has been annexed by the City of Edmonton and it's currently zoned Agricultural/Transitional Zoning and the City will allow a NUMBER OF DEVELOPMENTS ON THE SITE INCLUDING: RESIDENTIAL REDEVELOPMENT, RELIGIOUS ASSEMBLIES , SPORTS FACILITIES, GREENHOUSES ETC. The permitted uses are discretionary and can be found on the City of Edmonton Website. Situated Close To All Amenities Ever Desired, DO NOT MISS OUT, VIEW TODAY!!

Essential Information

MLS® #	E4429785
Price	\$3,800,000
Bathrooms	0.00
Acres	0.00
Type	Land Commercial



Status Active

Community Information

Address 1450 34 Street
Area Edmonton
Subdivision Meltwater
City Edmonton
County ALBERTA
Province AB
Postal Code T6X 1A5

Additional Information

Date Listed April 9th, 2025
Days on Market 7
Zoning Zone 53

DATA IS DEEMED RELIABLE BUT IS NOT GUARANTEED ACCURATE BY THE REALTORS® ASSOCIATION OF EDMONTON. COPYRIGHT 2025 BY THE REALTORS® ASSOCIATION OF EDMONTON. ALL RIGHTS RESERVED.Trademarks are owned or controlled by the Canadian Real Estate Association (CREA) and identify real estate professionals who are members of CREA (REALTOR®, REALTORS®) and/or the quality of services they provide (MLS®, Multiple Listing Service®)
Listing information last updated on April 16th, 2025 at 10:03am MDT