

\$569,900 - 1915 120 Street, Edmonton

MLS® #E4430184

\$569,900

3 Bedroom, 2.50 Bathroom, 2,076 sqft
Single Family on 0.00 Acres

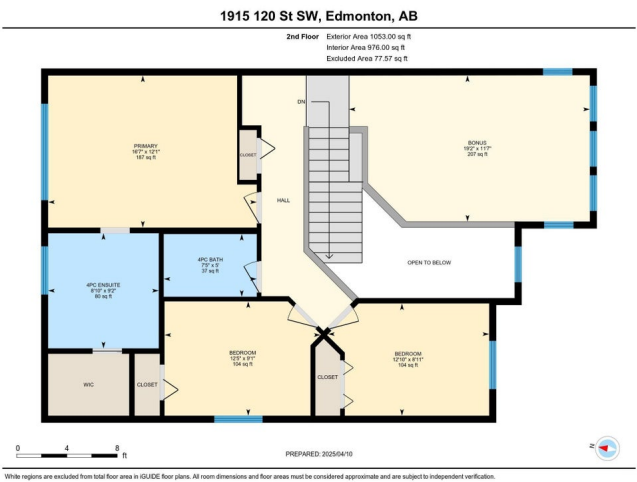
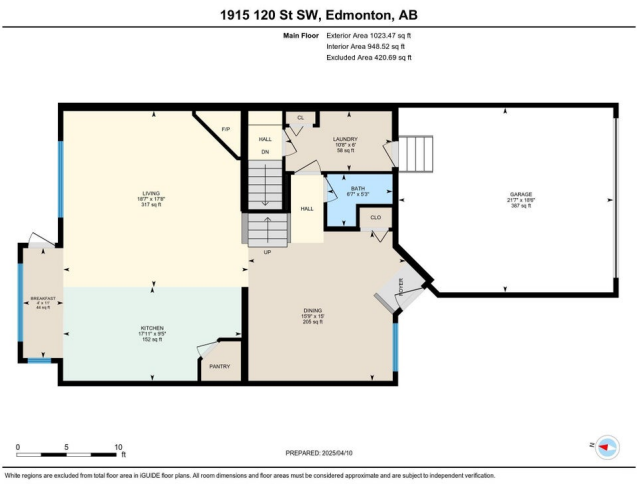
Rutherford (Edmonton), Edmonton, AB

This well-maintained 2-story home in the desirable Rutherford community of South Edmonton, situated on a quiet street, boasts 2076 sqft above-grade living space, features 3 bedrooms, 2.5 baths, and a double attached garage. Soaring vaulted ceiling in the foyer welcomes you into the home. A spacious entryway leads to the bright dining room. Rich hardwood flooring flows throughout the main floor. Open concept floor plan gives direct access to the kitchen featuring a load of maple cabinetry, a built-in desk, and a corner pantry. The living room opens up to a southeast-facing backyard and deck-- perfect for entertainment. A 2-pc bath completes the main floor. Upstairs, you'll find a bonus room with built-in bookshelves, 3 spacious bedrooms and a 4-pc shared bath, with the primary bedroom featuring a walk-in closet and a 4-pc ensuite. Unfinished basement with tons of potential. Close to schools, shopping, and all amenities, with quick access to the Henday.

Built in 2005

Essential Information

MLS® #	E4430184
Price	\$569,900
Bedrooms	3
Bathrooms	2.50



Full Baths	2
Half Baths	1
Square Footage	2,076
Acres	0.00
Year Built	2005
Type	Single Family
Sub-Type	Detached Single Family
Style	2 Storey
Status	Active

Community Information

Address	1915 120 Street
Area	Edmonton
Subdivision	Rutherford (Edmonton)
City	Edmonton
County	ALBERTA
Province	AB
Postal Code	T6W 0A9

Amenities

Amenities	Deck, Detectors Smoke
Parking	Double Garage Attached

Interior

Interior Features	ensuite bathroom
Appliances	Dishwasher-Built-In, Dryer, Hood Fan, Refrigerator, Stove-Electric, Washer, Window Coverings
Heating	Forced Air-1, Natural Gas
Stories	2
Has Basement	Yes
Basement	Full, Unfinished

Exterior

Exterior	Wood, Vinyl
Exterior Features	Back Lane, Fenced, Landscaped, Playground Nearby, Public Transportation, Schools, Shopping Nearby
Roof	Asphalt Shingles
Construction	Wood, Vinyl
Foundation	Concrete Perimeter

Additional Information

Date Listed April 10th, 2025
Days on Market 10
Zoning Zone 55

DATA IS DEEMED RELIABLE BUT IS NOT GUARANTEED ACCURATE BY THE REALTORS® ASSOCIATION OF EDMONTON. COPYRIGHT 2025 BY THE REALTORS® ASSOCIATION OF EDMONTON. ALL RIGHTS RESERVED.Trademarks are owned or controlled by the Canadian Real Estate Association (CREA) and identify real estate professionals who are members of CREA (REALTOR®, REALTORS®) and/or the quality of services they provide (MLS®, Multiple Listing Service®)
Listing information last updated on April 20th, 2025 at 3:02pm MDT