

## \$219,000 - 4-18-53-9-sse, Rural Lamont County

MLS® #E4430810

**\$219,000**

0 Bedroom, 0.00 Bathroom,  
Rural on 80.00 Acres

None, Rural Lamont County, AB

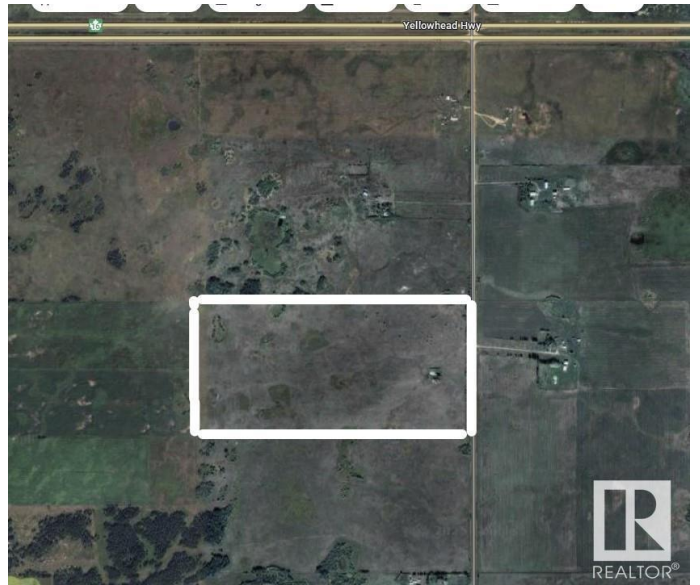
Looking to get away from the city?? 30 minutes to Sherwood Park. Maybe need some grazing land for your cattle/animals?? Come and take a look at this 80 acres approx 800 meters off highway 16, just enough that you don't realize it is there but have all the conveniences it provides. Comes with a dugout to water your animals and scenic grass lands!!

### Essential Information

MLS® #	E4430810
Price	\$219,000
Bathrooms	0.00
Acres	80.00
Type	Rural
Sub-Type	Vacant Lot/Land
Status	Active

### Community Information

Address	4-18-53-9-sse
Area	Rural Lamont County
Subdivision	None
City	Rural Lamont County
County	ALBERTA
Province	AB
Postal Code	T0B 0G8



## Exterior

Exterior Features   Stream/Pond, Partially Fenced

## Additional Information

Date Listed                April 14th, 2025

Days on Market        5

Zoning                    Zone 60

DATA IS DEEMED RELIABLE BUT IS NOT GUARANTEED ACCURATE BY THE REALTORS® ASSOCIATION OF EDMONTON. COPYRIGHT 2025 BY THE REALTORS® ASSOCIATION OF EDMONTON. ALL RIGHTS RESERVED. Trademarks are owned or controlled by the Canadian Real Estate Association (CREA) and identify real estate professionals who are members of CREA (REALTOR®, REALTORS®) and/or the quality of services they provide (MLS®, Multiple Listing Service®)

Listing information last updated on April 19th, 2025 at 1:17pm MDT