

\$670,000 - 14540 115 Avenue, Edmonton

MLS® #E4431253

\$670,000

0 Bedroom, 0.00 Bathroom,
Industrial on 0.00 Acres

Huff Bremner Estate Industrial, Edmonton, AB

2,772 SF industrial condo with rear fenced yard available for owner/user or investment. Front of the bay has reception, one office and a lunchroom. Warehouse is open with sump and 16' tall overhead door. Great location with easy access to 149 Street and Yellowhead Trail.

Built in 1964

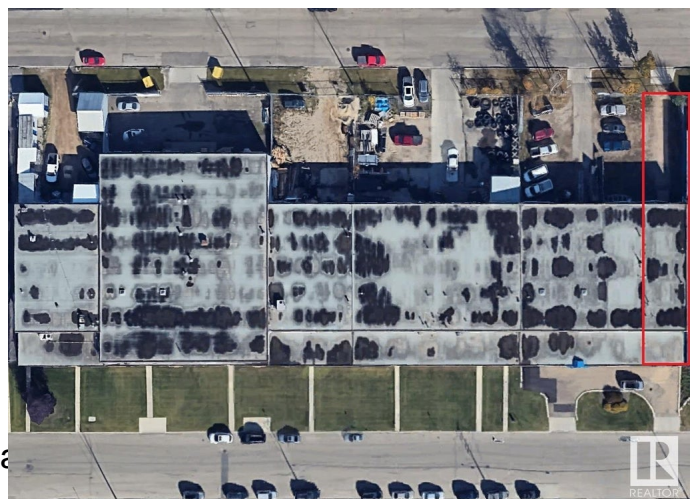
Essential Information

| | |
|------------|------------|
| MLS® # | E4431253 |
| Price | \$670,000 |
| Bathrooms | 0.00 |
| Acres | 0.00 |
| Year Built | 1964 |
| Type | Industrial |
| Status | Active |

Community Information

| | |
|-------------|--------------------------------|
| Address | 14540 115 Avenue |
| Area | Edmonton |
| Subdivision | Huff Bremner Estate Industrial |
| City | Edmonton |
| County | ALBERTA |
| Province | AB |
| Postal Code | T5M 3B9 |

Exterior



Exterior Block
Construction Block

Additional Information

Date Listed April 14th, 2025
Days on Market 5
Zoning Zone 40

DATA IS DEEMED RELIABLE BUT IS NOT GUARANTEED ACCURATE BY THE REALTORS® ASSOCIATION OF EDMONTON. COPYRIGHT 2025 BY THE REALTORS® ASSOCIATION OF EDMONTON. ALL RIGHTS RESERVED. Trademarks are owned or controlled by the Canadian Real Estate Association (CREA) and identify real estate professionals who are members of CREA (REALTOR®, REALTORS®) and/or the quality of services they provide (MLS®, Multiple Listing Service®)

Listing information last updated on April 19th, 2025 at 11:47am MDT