

## \$724,900 - 337 Still Creek Crescent, Sherwood Park

MLS® #E4431689

**\$724,900**

4 Bedroom, 3.50 Bathroom, 2,441 sqft

Single Family on 0.00 Acres

Summerwood, Sherwood Park, AB

Hello GORGEOUS! This fully finished family home is the ONE you've been waiting for, featuring AC, 4 bedrooms & 3.5 baths tucked onto a quiet street in the family friendly community of Summerwood. A bright & spacious entry invites you in to find 9' ceilings & hardwood flooring throughout the main level. The chef's kitchen offers plenty of modern 2 toned cabinets, S/S appliances, including gas stove, walk through pantry & quartz island that over looks the dining & living room with cozy fireplace. Complementing the functional layout is a 1/2 bath & mud room. Moving upstairs you will LOVE the king sized primary suite with 2 WI closets & luxurious ensuite. 2 more bdrms are both generous in size, 4pc bath, media room & bonus room - tons of room for the whole family! The basement is fully finished with vinyl plank flooring through the family sized rec room, 4th bdrm, flex space & 4pc bath, plus room for storage. ENJOY the fenced & landscaped SOUTH yard with tiered deck. Steps away from parks, trails & schools!

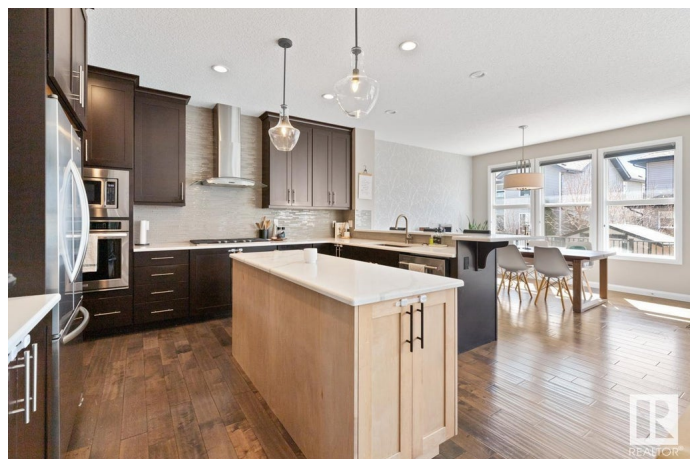
Built in 2013

### Essential Information

MLS® # E4431689

Price \$724,900

Bedrooms 4



Bathrooms	3.50
Full Baths	3
Half Baths	1
Square Footage	2,441
Acres	0.00
Year Built	2013
Type	Single Family
Sub-Type	Detached Single Family
Style	2 Storey
Status	Active

### Community Information

Address	337 Still Creek Crescent
Area	Sherwood Park
Subdivision	Summerwood
City	Sherwood Park
County	ALBERTA
Province	AB
Postal Code	T8H 0S7

### Amenities

Amenities	Air Conditioner, Ceiling 9 ft., Deck, Vinyl Windows, See Remarks
Parking	Double Garage Attached, Insulated

### Interior

Interior Features	ensuite bathroom
Appliances	Air Conditioning-Central, Dishwasher-Built-In, Dryer, Freezer, Hood Fan, Oven-Microwave, Refrigerator, Stove-Gas, Washer, Window Coverings, Wine/Beverage Cooler, TV Wall Mount
Heating	Forced Air-1, Natural Gas
Fireplace	Yes
Fireplaces	Tile Surround
Stories	3
Has Basement	Yes
Basement	Full, Finished

### Exterior

Exterior	Wood, Stone, Vinyl
Exterior Features	Fenced, Landscaped, Playground Nearby, Public Transportation,

Schools, Shopping Nearby, See Remarks

Roof	Asphalt Shingles
Construction	Wood, Stone, Vinyl
Foundation	Concrete Perimeter

**School Information**

Elementary	DAVIDSON CREEK
Middle	SHERWOOD HEIGHTS
High	SALISBURY COMP

**Additional Information**

Date Listed	April 18th, 2025
Days on Market	2
Zoning	Zone 25

DATA IS DEEMED RELIABLE BUT IS NOT GUARANTEED ACCURATE BY THE REALTORS® ASSOCIATION OF EDMONTON. COPYRIGHT 2025 BY THE REALTORS® ASSOCIATION OF EDMONTON. ALL RIGHTS RESERVED.Trademarks are owned or controlled by the Canadian Real Estate Association (CREA) and identify real estate professionals who are members of CREA (REALTOR®, REALTORS®) and/or the quality of services they provide (MLS®, Multiple Listing Service®)

Listing information last updated on April 20th, 2025 at 4:17pm MDT