

## \$180,000 - 77 150 Edwards Drive, Edmonton

MLS® #E4431694

**\$180,000**

1 Bedroom, 1.00 Bathroom, 739 sqft

Condo / Townhouse on 0.00 Acres

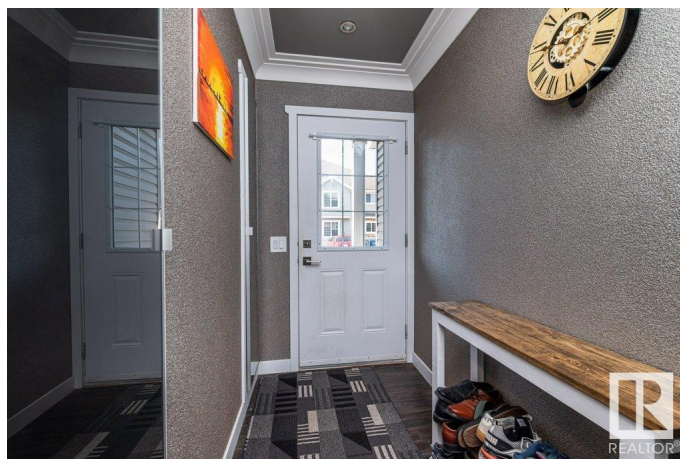
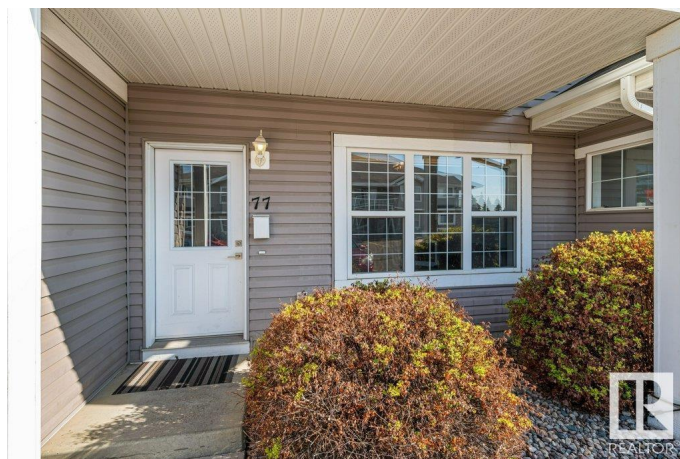
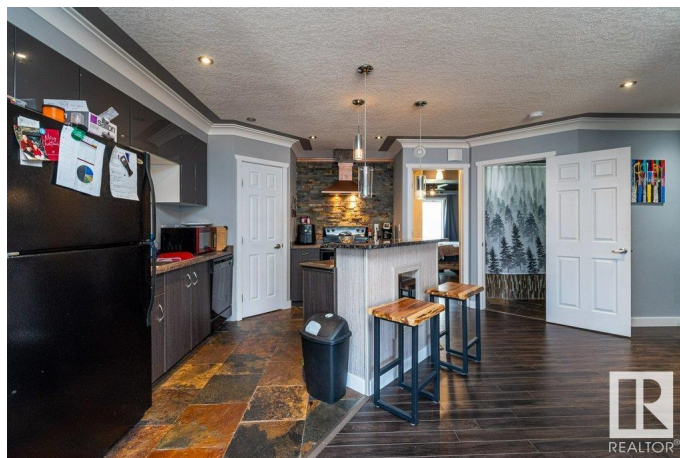
Ellerslie, Edmonton, AB

This unique carriage-style condo has been beautifully updated and is the perfect starter home or investment property. There's a spacious living and dining room with built-in cabinetry and corner electric fireplace. In the kitchen you will find slate flooring, a dine-in island, and a corner pantry while the dining area is extra spacious with beautiful built-ins. The 4-pc bath is a dream with newer vanity, vessel sink, tile surround, rain fall shower and slate flooring. Off the primary bedroom there is a walk-in closet with in-suite laundry and sliding door access to the private patio. Upgrades include pot lights, light fixtures, moldings, textured feature walls, newer moldings and coffered ceilings. With ample closet space, in-suite storage, and the extra built-in for shoes right off the front entrance you will appreciate just how efficiently everything fits into this lovely home!

Built in 2005

### Essential Information

|                |           |
|----------------|-----------|
| MLS® #         | E4431694  |
| Price          | \$180,000 |
| Bedrooms       | 1         |
| Bathrooms      | 1.00      |
| Full Baths     | 1         |
| Square Footage | 739       |



|            |                   |
|------------|-------------------|
| Acres      | 0.00              |
| Year Built | 2005              |
| Type       | Condo / Townhouse |
| Sub-Type   | Carriage          |
| Style      | Bungalow          |
| Status     | Active            |

### Community Information

|             |                      |
|-------------|----------------------|
| Address     | 77 150 Edwards Drive |
| Area        | Edmonton             |
| Subdivision | Ellerslie            |
| City        | Edmonton             |
| County      | ALBERTA              |
| Province    | AB                   |
| Postal Code | T6X 1M4              |

### Amenities

|                |                                                                     |
|----------------|---------------------------------------------------------------------|
| Amenities      | Detectors Smoke, No Smoking Home, Parking-Plug-Ins, Parking-Visitor |
| Parking Spaces | 1                                                                   |
| Parking        | Stall                                                               |

### Interior

|              |                                                                                       |
|--------------|---------------------------------------------------------------------------------------|
| Appliances   | Dishwasher-Built-In, Hood Fan, Oven-Microwave, Stacked Washer/Dryer, Window Coverings |
| Heating      | In Floor Heat System, Natural Gas                                                     |
| Fireplace    | Yes                                                                                   |
| Fireplaces   | Corner                                                                                |
| Stories      | 1                                                                                     |
| Has Basement | Yes                                                                                   |
| Basement     | None, No Basement                                                                     |

### Exterior

|                   |                                                                                                          |
|-------------------|----------------------------------------------------------------------------------------------------------|
| Exterior          | Wood, Stone, Vinyl                                                                                       |
| Exterior Features | Flat Site, Low Maintenance Landscape, Playground Nearby, Public Transportation, Schools, Shopping Nearby |
| Roof              | Asphalt Shingles                                                                                         |
| Construction      | Wood, Stone, Vinyl                                                                                       |
| Foundation        | Concrete Perimeter                                                                                       |

### Additional Information

|                |                  |
|----------------|------------------|
| Date Listed    | April 18th, 2025 |
| Days on Market | 3                |
| Zoning         | Zone 53          |
| Condo Fee      | \$399            |

DATA IS DEEMED RELIABLE BUT IS NOT GUARANTEED ACCURATE BY THE REALTORS® ASSOCIATION OF EDMONTON. COPYRIGHT 2025 BY THE REALTORS® ASSOCIATION OF EDMONTON. ALL RIGHTS RESERVED. Trademarks are owned or controlled by the Canadian Real Estate Association (CREA) and identify real estate professionals who are members of CREA (REALTOR®, REALTORS®) and/or the quality of services they provide (MLS®, Multiple Listing Service®)

Listing information last updated on April 21st, 2025 at 4:32am MDT