

\$1,399,000 - 53125 Rr 195, Rural Yellowhead

MLS® #E4432303

\$1,399,000

4 Bedroom, 3.50 Bathroom, 2,705 sqft

Rural on 151.79 Acres

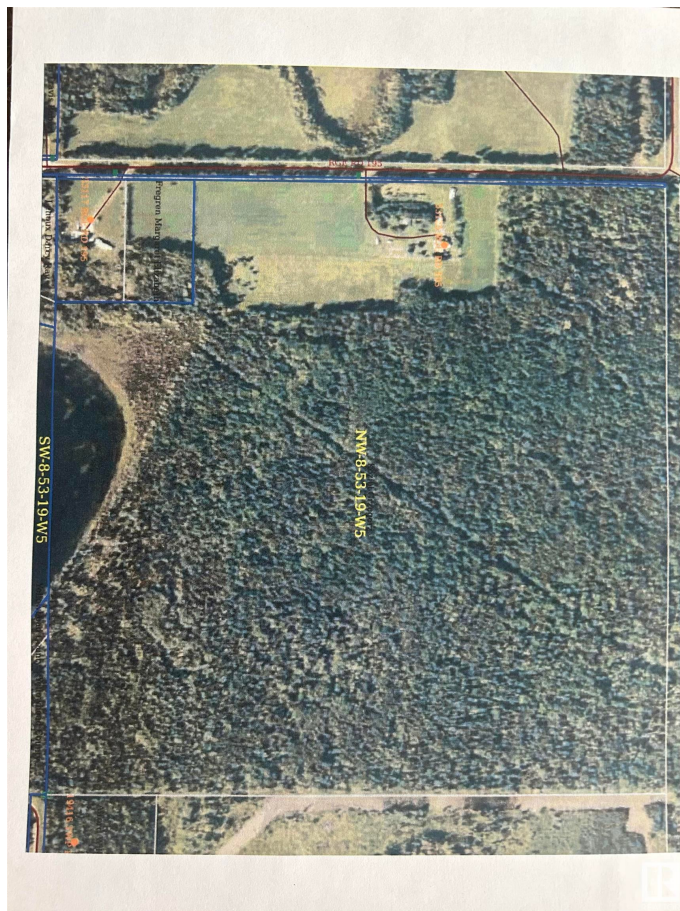
None, Rural Yellowhead, AB

GORGEOUS OVER 2700 SQFT LOG HOUSE and 900 SQFT GUEST HOUSE, DOUBLE GARAGE ON 151.79 ACRES OF LAND ATTACHED TO MILLERS Located 1 1/2 km off the Yellowhead Highway, 1 hr. from famous Jasper National Park & 2.5 Hrs from the City of Edmonton. Adjacent to regularly trout-stocked Miller Lake (23 km West of Edson). Open concept allows for ease of great entertaining as does the massive outdoor covered deck surrounding 2 sides of main level! Upper loft has a private deck. This property has access to hunting, fishing, quading and ski trails

Built in 1995

Essential Information

MLS® #	E4432303
Price	\$1,399,000
Bedrooms	4
Bathrooms	3.50
Full Baths	3
Half Baths	1
Square Footage	2,705
Acres	151.79
Year Built	1995
Type	Rural
Sub-Type	Detached Single Family
Style	2 Storey



Status	Active
--------	--------

Community Information

Address	53125 Rr 195
Area	Rural Yellowhead
Subdivision	None
City	Rural Yellowhead
County	ALBERTA
Province	AB
Postal Code	T7E 3A2

Amenities

Features	Deck, Detectors Smoke, Guest Suite, R.V. Storage
----------	--

Interior

Interior Features	ensuite bathroom
Heating	Forced Air-1, Natural Gas
Stories	3
Has Basement	Yes
Basement	Full, Finished

Exterior

Exterior	Log
Exterior Features	Backs Onto Lake, Backs Onto Park/Trees, Lake Access Property, Lake View, Landscaped, Treed Lot
Construction	Log
Foundation	Concrete Perimeter

Additional Information

Date Listed	April 23rd, 2025
Days on Market	1
Zoning	Zone 70

DATA IS DEEMED RELIABLE BUT IS NOT GUARANTEED ACCURATE BY THE REALTORS® ASSOCIATION OF EDMONTON. COPYRIGHT 2025 BY THE REALTORS® ASSOCIATION OF EDMONTON. ALL RIGHTS RESERVED. Trademarks are owned or controlled by the Canadian Real Estate Association (CREA) and identify real estate professionals who are members of CREA (REALTOR®, REALTORS®) and/or the quality of services they provide (MLS®, Multiple Listing Service®)

Listing information last updated on April 24th, 2025 at 2:17am MDT