

\$765,000 - 9835 143 Street, Edmonton

MLS® #E4432820

\$765,000

0 Bedroom, 0.00 Bathroom,
Single Family on 0.00 Acres

Crestwood, Edmonton, AB

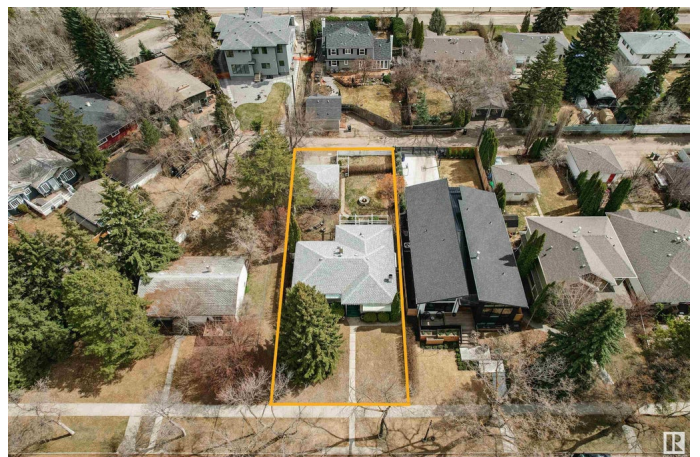
Prime Lot in Prestigious Crestwood â€” Build Your Dream Home! Discover the perfect canvas for your custom home on this expansive 53.7' x 144.9' lot across from an island park. Enjoy a vibrant community with great schools, Lâ€™™Oca Market, charming restaurants, cozy coffee shops, and quick access to downtown â€” all just minutes away. You're conveniently steps away from the Mackinnon Ravine with trails leading to the North Saskatchewan River. This is the lot you've been waiting for.

Essential Information

MLS® #	E4432820
Price	\$765,000
Bathrooms	0.00
Acres	0.00
Type	Single Family
Sub-Type	Vacant Lot/Land
Status	Active

Community Information

Address	9835 143 Street
Area	Edmonton
Subdivision	Crestwood
City	Edmonton
County	ALBERTA



Province	AB
Postal Code	T5N 2R4

Exterior

Exterior Features	Back Lane, Paved Lane, Playground Nearby, Public Transportation, Schools, Shopping Nearby
-------------------	---

School Information

Elementary	Crestwood School
Middle	Crestwood School
High	Ross Shepherd High School

Additional Information

Date Listed	April 25th, 2025
Days on Market	2
Zoning	Zone 10

DATA IS DEEMED RELIABLE BUT IS NOT GUARANTEED ACCURATE BY THE REALTORS® ASSOCIATION OF EDMONTON. COPYRIGHT 2025 BY THE REALTORS® ASSOCIATION OF EDMONTON. ALL RIGHTS RESERVED.Trademarks are owned or controlled by the Canadian Real Estate Association (CREA) and identify real estate professionals who are members of CREA (REALTOR®, REALTORS®) and/or the quality of services they provide (MLS®, Multiple Listing Service®)

Listing information last updated on April 27th, 2025 at 9:31am MDT