

\$185,000 - 1401 12121 Jasper Avenue, Edmonton

MLS® #E4433038

\$185,000

1 Bedroom, 1.00 Bathroom, 719 sqft
Condo / Townhouse on 0.00 Acres

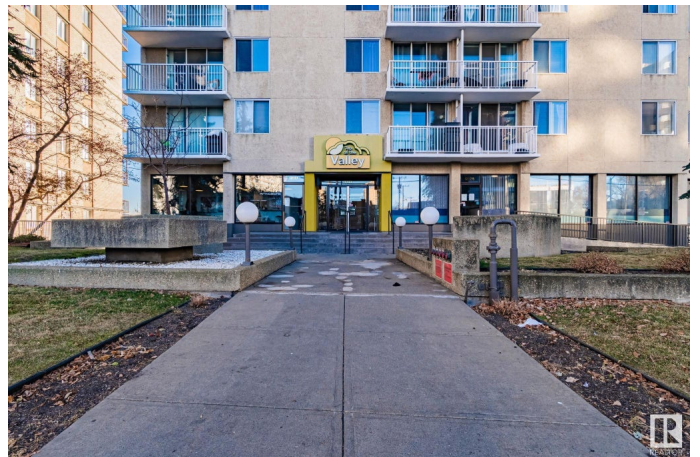
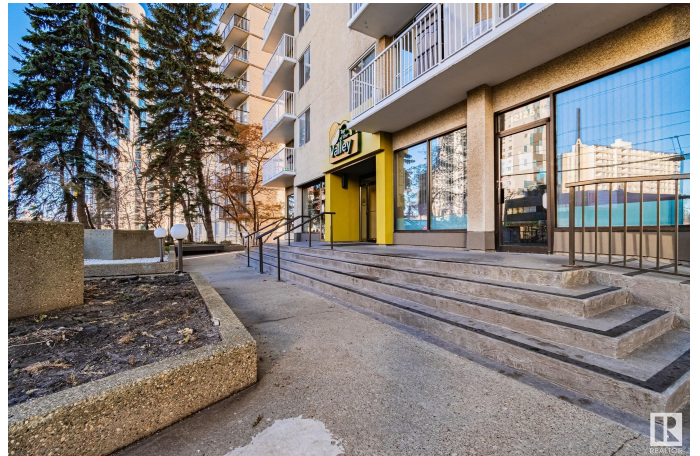
Wähkwãntãwin, Edmonton, AB

"Top Of The Valley" is just off 124 St and Jasper Ave. w/ spectacular panoramic views of Victoria Golf Course & The North Saskatchewan River Valley. A quick walk to the Victoria Promenade and downtown conveniences like shopping, dining, medical offices, religious services, and public transportation. Walk to High Street shops & restaurants! On-site property management, renovated gym w/views, updated laundry room-complimentary to residents, social room, library, lounge area w/balcony, Canada Post Boxes. Community garden area at rear. Trendy light grey & white colours! Luxury vinyl flooring, quartz countertops etc. Large in-suite storage room/office nook/ flex area. Built-in solid wood (white) cabinetry in dining & living room areas. Secured laundry room on 4th floor and complimentary for residents. Heated, secured parkade w/Titled parking stall. On-site gym, social room, mailboxes. \$4000.00 new levy to be paid in full by seller.

Built in 1975

Essential Information

MLS® #	E4433038
Price	\$185,000
Bedrooms	1
Bathrooms	1.00



Full Baths	1
Square Footage	719
Acres	0.00
Year Built	1975
Type	Condo / Townhouse
Sub-Type	Apartment High Rise
Style	Single Level Apartment
Status	Active

Community Information

Address	1401 12121 Jasper Avenue
Area	Edmonton
Subdivision	WÃ©hkwÃ©ntÃ©win
City	Edmonton
County	ALBERTA
Province	AB
Postal Code	T5N 3X7

Amenities

Amenities	Off Street Parking, Carbon Monoxide Detectors, Deck, Detectors Smoke, Intercom, No Animal Home, No Smoking Home, Parking-Visitor, Party Room, Patio, Smart/Program. Thermostat, Secured Parking, Security Door, Social Rooms, Storage-In-Suite, Wall Unit-Built-In
Parking	Insulated, Parkade

Interior

Appliances	Dishwasher-Built-In, Hood Fan, Intercom, Refrigerator, Stove-Electric, Window Coverings
Heating	Baseboard, Hot Water, Water
# of Stories	17
Stories	1
Has Basement	Yes
Basement	None, No Basement

Exterior

Exterior	Concrete, Stucco
Exterior Features	Backs Onto Park/Trees, Flat Site, Fruit Trees/Shrubs, Golf Nearby, Hillside, Landscaped, Low Maintenance Landscape, Picnic Area, Public Transportation, River Valley View, Shopping Nearby, View City, View Downtown

Roof	Unknown
Construction	Concrete, Stucco
Foundation	Concrete Perimeter

Additional Information

Date Listed	April 26th, 2025
Days on Market	2
Zoning	Zone 12
Condo Fee	\$655

DATA IS DEEMED RELIABLE BUT IS NOT GUARANTEED ACCURATE BY THE REALTORS® ASSOCIATION OF EDMONTON. COPYRIGHT 2025 BY THE REALTORS® ASSOCIATION OF EDMONTON. ALL RIGHTS RESERVED. Trademarks are owned or controlled by the Canadian Real Estate Association (CREA) and identify real estate professionals who are members of CREA (REALTOR®, REALTORS®) and/or the quality of services they provide (MLS®, Multiple Listing Service®)

Listing information last updated on April 28th, 2025 at 4:47pm MDT